

**Transmission of material in this release is embargoed until
8:30 a.m. (EST) Friday, February 19, 2010**

USDL-10-0207

Technical information: (202) 691-7000 • Reed.Steve@bls.gov • www.bls.gov/cpi
Media Contact: (202) 691-5902 • PressOffice@bls.gov

CONSUMER PRICE INDEX – JANUARY 2010

On a seasonally adjusted basis, the January Consumer Price Index for All Urban Consumers (CPI-U) rose 0.2 percent, the U.S. Bureau of Labor Statistics reported today. Over the last 12 months, the index increased 2.6 percent before seasonal adjustment.

The seasonally adjusted increase in the all items index was due to a rise in the energy index. An increase in the gasoline index was the main factor, and the indexes for fuel oil and natural gas rose as well, though the electricity index declined.

The index for all items less food and energy fell 0.1 percent in January. This decline was largely the result of decreases in the indexes for shelter, new vehicles, and airline fares. In contrast, the medical care index posted its largest increase since January 2008, and the index for used cars and trucks increased significantly for the sixth month in a row.

The food index increased in January, with the food at home component posting its largest increase since September 2008. Sharp increases in the indexes for dairy and related products and for fruits and vegetables accounted for most of the increase.

Chart 1. One-month percent change in CPI for All Urban Consumers (CPI-U), seasonally adjusted, Jan. 2009 - Jan. 2010
Percent change

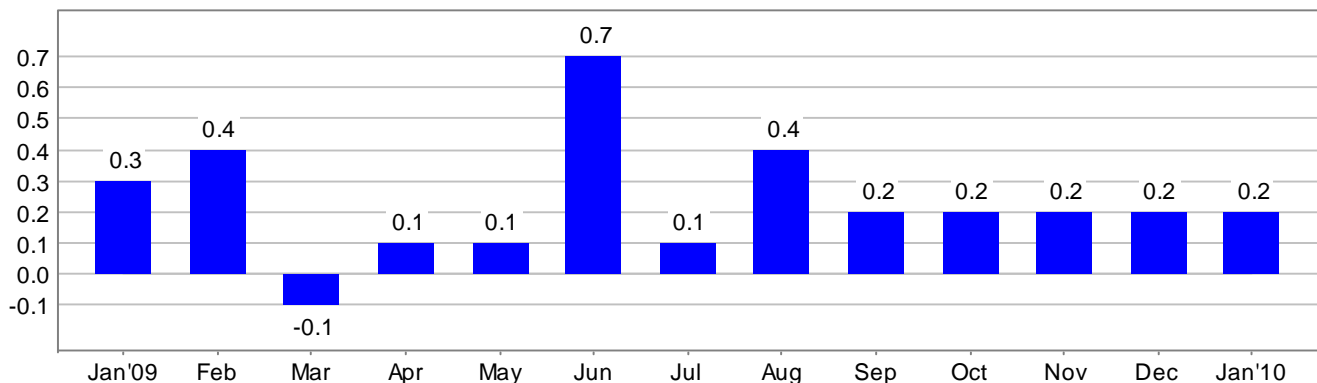


Chart 2. 12-month percent change in CPI for All Urban Consumers (CPI-U), not seasonally adjusted, Jan. 2009 - Jan. 2010

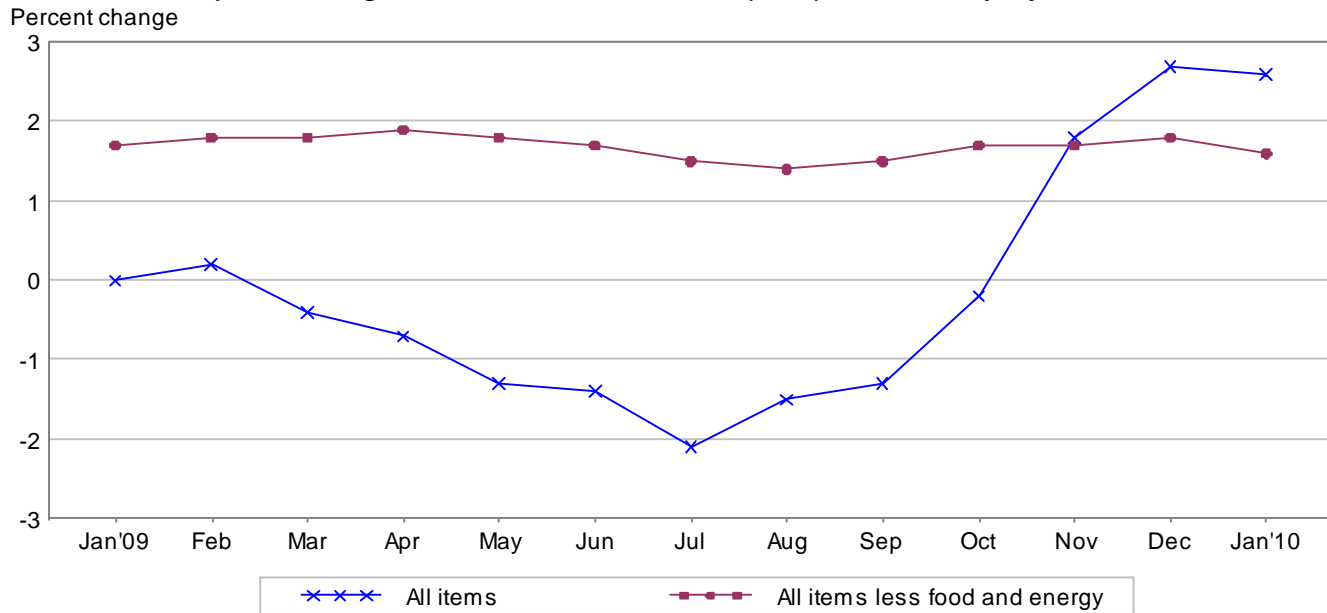


Table A. Percent changes in CPI for All Urban Consumers (CPI-U): U.S. city average

| | Seasonally adjusted changes from preceding month | | | | | | | Un-adjusted 12-mos. ended Jan. 2010 |
|---|--|-----------|-----------|-----------|-----------|-----------|-----------|-------------------------------------|
| | July 2009 | Aug. 2009 | Sep. 2009 | Oct. 2009 | Nov. 2009 | Dec. 2009 | Jan. 2010 | |
| All items | .1 | .4 | .2 | .2 | .2 | .2 | .2 | 2.6 |
| Food | -.2 | .0 | -.1 | .0 | .1 | .1 | .2 | -.4 |
| Food at home | -.5 | -.1 | -.3 | .0 | .0 | .2 | .4 | -2.0 |
| Food away from home ¹ | .1 | .1 | .1 | .1 | .2 | .1 | .1 | 1.6 |
| Energy | .5 | 3.7 | .6 | .6 | 2.2 | .8 | 2.8 | 19.1 |
| Energy commodities | 1.0 | 6.7 | 1.1 | .4 | 3.0 | 1.6 | 4.9 | 46.6 |
| Gasoline (all types) | 1.1 | 6.9 | .9 | .3 | 2.7 | 2.3 | 4.4 | 51.3 |
| Fuel oil ¹ | -.3 | 5.0 | -.3 | 2.2 | 7.4 | .0 | 6.1 | 19.3 |
| Energy services | -.2 | .1 | -.1 | .8 | 1.1 | -.3 | .0 | -4.7 |
| Electricity | -.4 | -.1 | .3 | .8 | 1.2 | -.2 | -1.1 | -1.9 |
| Utility (piped) gas service | .5 | .5 | -1.5 | .7 | .9 | -.7 | 3.5 | -12.2 |
| All items less food and energy | .1 | .1 | .2 | .2 | .0 | .1 | -.1 | 1.6 |
| Commodities less food and energy | | | | | | | | |
| commodities | .2 | -.2 | .3 | .4 | .2 | .1 | .1 | 2.9 |
| New vehicles | .5 | -1.0 | .3 | 1.4 | .5 | -.2 | -.5 | 4.1 |
| Used cars and trucks | .0 | 2.0 | 1.7 | 3.1 | 1.9 | 2.2 | 1.5 | 11.5 |
| Apparel | .4 | .0 | .2 | -.3 | -.3 | .4 | -.1 | 1.7 |
| Medical care commodities ¹ | -.1 | .5 | .6 | .2 | .1 | -.1 | .7 | 3.5 |
| Services less energy services | .1 | .2 | .1 | .1 | .0 | .1 | -.2 | 1.0 |
| Shelter | -.1 | .1 | .0 | .0 | -.2 | .0 | -.5 | -.1 |
| Transportation services | .5 | .5 | .7 | .5 | .5 | .3 | -.3 | 3.3 |
| Medical care services | .3 | .2 | .3 | .2 | .3 | .2 | .5 | 3.5 |

¹ Not seasonally adjusted.

Consumer Price Index Data for January 2010

Food

The food index rose 0.2 percent in January. The food at home index increased 0.4 percent, with four of the six grocery store food groups posting increases. The index for dairy and related products rose 2.1 percent in January, but still has declined over the past 12 months. The index for fruits and vegetables increased 1.3 percent due to a 2.8 percent increase in the index for fresh fruits. The index for meats, poultry, fish, and eggs rose 0.4 percent and the index for nonalcoholic beverages advanced 0.2 percent. The indexes for cereals and bakery products declined in January, falling 0.5 percent, and the index for other food at home declined 0.3 percent. The index for food away from home increased 0.1 percent in January. Over the last 12 months, the food index has declined 0.4 percent with the food at home index down 2.0 percent and the index for food away from home up 1.6 percent.

Energy

The energy index rose 2.8 percent in January, its ninth consecutive increase. The index for energy commodities increased 4.9 percent, with the gasoline index rising 4.4 percent. The index for household energy rose 0.5 percent in January. The fuel oil index increased 6.1 percent and the index for natural gas rose 3.5 percent, while the electricity index declined 1.1 percent. Over the past 12 months, the energy index has risen 19.1 percent, with the gasoline index up 51.3 percent but the index for household energy down 3.5 percent.

All items less food and energy

The index for all items less food and energy declined 0.1 percent in January after rising 0.1 percent in December. The shelter index declined 0.5 percent. The index for lodging away from home fell 2.1 percent, while the rent index was unchanged and the index for owners' equivalent rent declined 0.1 percent. The index for new vehicles fell 0.5 percent, its second consecutive decline, and the index for airline fares turned down in January, falling 2.5 percent after increasing in each of the past six months. The indexes for household furnishings and operations, for apparel, and for recreation all decreased 0.1 percent in January. In contrast, the medical care index rose 0.5 percent. The index for medical care commodities rose 0.7 percent and the medical care services index advanced 0.5 percent. Also increasing was the index for used cars and trucks, which rose 1.5 percent in January and has increased 12.9 percent over the past six months. The index for all items less food and energy has risen 1.6 percent over the past 12 months.

Not seasonally adjusted CPI measures

The Consumer Price Index for All Urban Consumers (CPI-U) increased 2.6 percent over the last 12 months to an index level of 216.687 (1982-84=100). For the month, the index increased 0.3 percent prior to seasonal adjustment.

The Consumer Price Index for Urban Wage Earners and Clerical Workers (CPI-W) increased 3.3 percent over the last 12 months to an index level of 212.568 (1982-84=100). For the month, the index increased 0.4 percent prior to seasonal adjustment.

The Chained Consumer Price Index for All Urban Consumers (C-CPI-U) increased 2.8 percent over the last 12 months. For the month, the index increased 0.4 percent on a not seasonally adjusted basis. Please note that the indexes for the post-2008 period are subject to revision.

The Consumer Price Index for February 2010 is scheduled to be released on Thursday, March 18, 2010, at 8:30 a.m. (EDT).

Effective with this release of CPI data, the BLS is introducing several item structure and other publication changes into the CPI. See page 6 for further information.

Revised seasonally adjusted changes

Over-the-month percent changes in the U.S. City Average Consumer Price Index for All Urban Consumers (CPI-U) for All Items and for All Items less food and energy, seasonally adjusted, using former and recalculated seasonal factors for 2009.

All Items

| 2009 | Former | Recalculated | Difference |
|-------------|---------------|---------------------|-------------------|
| January | .3 | .3 | .0 |
| February | .4 | .4 | .0 |
| March | -.1 | -.1 | .0 |
| April | .0 | .1 | .1 |
| May | .1 | .1 | .0 |
| June | .7 | .7 | .0 |
| July | .0 | .1 | .1 |
| August | .4 | .4 | .0 |
| September | .2 | .2 | .0 |
| October | .3 | .2 | -.1 |
| November | .4 | .2 | -.2 |
| December | .1 | .2 | .1 |

All Items less food and energy

| 2009 | Former | Recalculated | Difference |
|-------------|---------------|---------------------|-------------------|
| January | .2 | .2 | .0 |
| February | .2 | .2 | .0 |
| March | .2 | .2 | .0 |
| April | .3 | .2 | -.1 |
| May | .1 | .1 | .0 |
| June | .2 | .2 | .0 |
| July | .1 | .1 | .0 |
| August | .1 | .1 | .0 |
| September | .2 | .2 | .0 |
| October | .2 | .2 | .0 |
| November | .0 | .0 | .0 |
| December | .1 | .1 | .0 |

C-CPI-U Index Revisions

As scheduled, effective with release of data for January 2010, the Chained Consumer Price Index for All Urban Consumers (C-CPI-U) has undergone its annual revision. Because the current expenditure data required for the calculation of the C-CPI-U are available only with a time lag, the index is issued first in preliminary form, using the latest available expenditure data at the time of publication, and is subject to two subsequent revisions. Therefore, C-CPI-U indexes for the 12 months of 2008 will be issued in final form – employing monthly expenditure weights from 2008. Values for the 12 months of 2009 will be revised and issued as interim, using expenditure weights from the 2007-2008 period. Calculation of the initial value of the January 2010 C-CPI-U index, and all subsequent months in 2010, will also be based upon 2007-2008 expenditure weights.

For more information on the C-CPI-U, contact Rob Cage by telephone at (202) 691-6959 or by electronic mail at Cage.Rob@bls.gov.

Item Structure and publication changes for January 2010

Effective with this release of CPI data, the BLS is introducing several item structure and other publication changes into the CPI.

Shelter. The expenditure weight for second homes will be moved from Lodging away from home to a new, unpriced stratum under the Owners' equivalent rent expenditure class. As such, the expenditure class index for Owners' equivalent rent will now include both primary and secondary homes, and the title of that expenditure class index will change from Owners' equivalent rent of primary residences to Owners' equivalent rent of residences. Both the expenditure class (Owners' equivalent rent of residences), and the Owners' equivalent rent of primary residence stratum within it, will be published.

Current Structure

Lodging away from home

Housing at school, excluding board

Other lodging away from home including hotels and motels

Owners' equivalent rent of primary residence

Owners' equivalent rent of primary residence*

New Structure

Lodging away from home

Housing at school, excluding board

Other lodging away from home, including hotels and motels

Owners' equivalent rent of residences

Owners' equivalent rent of primary residence

Unsampled owners' equivalent rent of secondary residences*

Medical care commodities. The item structure for Medical care commodities will change:

Current Structure

Medical care commodities

Prescription drugs

Prescription drugs

Unsampled rent or repair of medical equipment*

Nonprescription drugs and medical supplies

Internal and respiratory OTC drugs

Nonprescription medical equipment and supplies

New Structure

Medical Care Commodities

Medicinal drugs

Prescription drugs

Nonprescription drugs

Medical equipment and supplies

Medical equipment and supplies

Unsampled rent or repair of medical equipment*

Telephone services. The item structure for telephone services will also change:

Current structure

Telephone services

Land-line telephone services, local charges

Land-line telephone services, long distance

Wireless telephone services

New structure

Telephone services

Wireless telephone services

Land-line telephone services

Indexes that are deemed continuous will have the same reference base previously used. New index series will have a December 2009 = 100 reference base. Unpublished series are indicated with a *.

Other publication changes

The index for State and local registration and license will be retitled State motor vehicle registration and license fees.

A new index for Intracity mass transit will be published. Indexes for Land-line interstate toll calls and Land-line intrastate toll calls will be discontinued.

Expenditure Weight Update

Effective with the release of the January 2010 CPI on February 19, 2010, the Bureau of Labor Statistics (BLS) will update the consumption expenditure weights in the Consumer Price Index for All Urban Consumers (CPI-U) and Consumer Price Index for Urban Wage Earners and Clerical Workers (CPI-W) to the 2007-08 period. The updated expenditure weights for these indexes will replace the 2005-2006 weights that were introduced effective with the January 2008 CPI release. As originally announced by BLS in December 1998, CPI expenditure weights will continue to be updated at two-year intervals.

Facilities for Sensory Impaired

Information from this release will be made available to sensory impaired individuals upon request. Voice phone: 202-691-5200, Federal Relay Services: 1-800-877-8339.

Brief Explanation of the CPI

The Consumer Price Index (CPI) is a measure of the average change in prices over time of goods and services purchased by households. The Bureau of Labor Statistics publishes CPIs for two population groups: (1) the CPI for Urban Wage Earners and Clerical Workers (CPI-W), which covers households of wage earners and clerical workers that comprise approximately 32 percent of the total population and (2) the CPI for All Urban Consumers (CPI-U) and the Chained CPI for All Urban Consumers (C-CPI-U), which cover approximately 87 percent of the total population and include in addition to wage earners and clerical worker households, groups such as professional, managerial, and technical workers, the self-employed, short-term workers, the unemployed, and retirees and others not in the labor force.

The CPIs are based on prices of food, clothing, shelter, and fuels, transportation fares, charges for doctors' and dentists' services, drugs, and other goods and services that people buy for day-to-day living. Prices are collected each month in 87 urban areas across the country from about 4,000 housing units and approximately 25,000 retail establishments-department stores, supermarkets, hospitals, filling stations, and other types of stores and service establishments. All taxes directly associated with the purchase and use of items are included in the index. Prices of fuels and a few other items are obtained every month in all 87 locations. Prices of most other commodities and services are collected every month in the three largest geographic areas and every other month in other areas. Prices of most goods and services are obtained by personal visits or telephone calls of the Bureau's trained representatives.

In calculating the index, price changes for the various items in each location are averaged together with weights, which represent their importance in the spending of the appropriate population group. Local data are then combined to obtain a U.S. city average. For the CPI-U and CPI-W separate indexes are also published by size of city, by region of the country, for cross-classifications of regions and population-size classes, and for 27 local areas. Area indexes do not measure differences in the level of prices among cities; they only measure the average change in prices for each area since the base period. For the C-CPI-U data are issued only at the national level. It is important to note that the CPI-U and CPI-W are considered final when released, but the C-CPI-U is issued in preliminary form and subject to two annual revisions.

The index measures price change from a designed reference date. For the CPI-U and the CPI-W the reference base is 1982-84 equals 100.0. The reference base for the C-CPI-U is December 1999 equals 100. An increase of 16.5 percent from the reference base, for example, is shown as 116.5. This change can also be expressed in dollars as follows: the price of a base period market basket of goods and services in the CPI has risen from \$10 in 1982-84 to \$11.65.

For further details visit the CPI home page on the Internet at <http://www.bls.gov/cpi/> or contact our CPI Information and Analysis Section on (202) 691-7000.

Note on Sampling Error in the Consumer Price Index

The CPI is a statistical estimate that is subject to sampling error because it is based upon a sample of retail prices and not the complete universe of all prices. BLS calculates and publishes estimates of the 1-month, 2-month, 6-month and 12-month percent change standard errors annually, for the CPI-U. These standard error estimates can be used to construct confidence intervals for hypothesis testing. For example, the estimated standard error of the 1 month percent change is 0.04 percent for the U.S. All Items Consumer Price Index. This means that if we repeatedly sample from the universe of all retail prices using the same methodology, and estimate a percentage change for each sample, then 95% of these estimates would be within 0.08 percent of the 1 month percentage change based on all retail prices. For example, for a 1-month change of 0.2 percent in the All Items CPI for All Urban Consumers, we are 95 percent confident that the actual percent change based on all retail prices would fall between 0.12 and 0.28 percent. For the latest data, including information on how to use the estimates of standard error, see “Variance Estimates for Price Changes in the Consumer Price Index, January-December 2008”. These data are available on the CPI home page (<http://www.bls.gov/cpi/>), or by using the following link <http://www.bls.gov/cpi/cpivar2008.pdf>

Calculating Index Changes

Movements of the indexes from one month to another are usually expressed as percent changes rather than changes in index points, because index point changes are affected by the level of the index in relation to its base period while percent changes are not. The example below illustrates the computation of index point and percent changes.

Percent changes for 3-month and 6-month periods are expressed as annual rates and are computed according to the standard formula for compound growth rates. These data indicate what the percent change would be if the current rate were maintained for a 12-month period.

Index Point Change

| | |
|---------------------------|---------|
| CPI | 202.416 |
| Less previous index | 201.800 |
| Equals index point change | .616 |

Percent Change

| | |
|-----------------------------------|-----------|
| Index point difference | .616 |
| Divided by the previous index | 201.800 |
| Equals | 0.003 |
| Results multiplied by one hundred | 0.003x100 |
| Equals percent change | 0.3 |

Regions Defined

The states in the four regions shown in Tables 3 and 6 are listed below.

The Northeast--Connecticut, Maine, Massachusetts, New Hampshire, New York, New Jersey, Pennsylvania, Rhode Island, and Vermont.

The Midwest--Illinois, Indiana, Iowa, Kansas, Michigan, Minnesota, Missouri, Nebraska, North Dakota, Ohio, South Dakota, and Wisconsin.

The South--Alabama, Arkansas, Delaware, Florida, Georgia, Kentucky, Louisiana, Maryland, Mississippi, North Carolina, Oklahoma, South Carolina, Tennessee, Texas, Virginia, West Virginia, and the District of Columbia.

The West--Alaska, Arizona, California, Colorado, Hawaii, Idaho, Montana, Nevada, New Mexico, Oregon, Utah, Washington, and Wyoming.

A Note on Seasonally Adjusted and Unadjusted Data

Because price data are used for different purposes by different groups, the Bureau of Labor Statistics publishes seasonally adjusted as well as unadjusted changes each month.

For analyzing general price trends in the economy, seasonally adjusted changes are usually preferred since they eliminate the effect of changes that normally occur at the same time and in about the same magnitude every year--such as price movements resulting from changing climatic conditions, production cycles, model changeovers, holidays, and sales.

The unadjusted data are of primary interest to consumers concerned about the prices they actually pay. Unadjusted data also are used extensively for escalation purposes. Many collective bargaining contract agreements and pension plans, for example, tie compensation changes to the Consumer Price Index before adjustment for seasonal variation.

Seasonal factors used in computing the seasonally adjusted indexes are derived by the X-12-ARIMA Seasonal Adjustment Method. Seasonally adjusted indexes and seasonal factors are computed annually. Each year, the last 5 years of seasonally adjusted data are revised. Data from January 2005 through December 2009 were replaced in January 2010. Exceptions to the usual revision schedule were: the updated seasonal data at the end of 1977 replaced data from 1967 through 1977; and, in January 2002, dependently seasonally adjusted series were revised for January 1987-December 2001 as a result of a change in the aggregation weights for dependently adjusted series. For further information, please see "Aggregation of Dependently Adjusted Seasonally Adjusted Series," in the October 2001 issue of the CPI Detailed Report.

The seasonal movement of all items and 54 other aggregations is derived by combining the seasonal movement of 73 selected components. Each year the seasonal status of every series is reevaluated based upon certain statistical criteria. If any of the 73 components change their seasonal adjustment status from seasonally adjusted to not seasonally adjusted, not seasonally adjusted data will be used in the aggregation of the dependent series for the last 5 years, but the seasonally adjusted indexes will be used before that period. Note: 46 of the 73 components are seasonally adjusted for 2010.

Seasonally adjusted data, including the all items index levels, are subject to revision for up to five years after their original release. For this reason, BLS advises against the use of these data in escalation agreements.

Effective with the calculation of the seasonal factors for 1990, the Bureau of Labor Statistics has used an enhanced seasonal adjustment procedure called Intervention Analysis Seasonal Adjustment for some CPI series. Intervention Analysis Seasonal Adjustment allows for better estimates of seasonally adjusted data. Extreme values and/or sharp movements which might distort the seasonal pattern are estimated and removed from the data prior to calculation of seasonal factors. Beginning with the calculation of seasonal factors for 1996, X-12-ARIMA software was used for Intervention Analysis Seasonal Adjustment.

For the seasonal factors introduced in January 2010, BLS adjusted 30 series using Intervention Analysis Seasonal Adjustment, including selected food and beverage items, motor fuels, electricity and vehicles. For example, this procedure was used for the Motor fuel series to offset the effects of events such as damage to oil refineries from Hurricane Katrina.

For a complete list of Intervention Analysis Seasonal Adjustment series and explanations, please refer to the article "Intervention Analysis Seasonal Adjustment", located on our website at <http://www.bls.gov/cpi/cpisapage.htm>.

For additional information on seasonal adjustment in the CPI, please write to the Bureau of Labor Statistics, Division of Consumer Prices and Price Indexes, Washington, DC 20212 or contact David Levin at (202) 691-6968, or by e-mail at Levin.David@bls.gov. If you have general questions about the CPI, please call our information staff at (202) 691-7000.

Table 1. Consumer Price Index for All Urban Consumers (CPI-U): U.S. city average, by expenditure category and commodity and service group

(1982-84=100, unless otherwise noted)

| CPI-U Expenditure category | Relative importance, December 2009 | Unadjusted indexes | | Unadjusted percent change to Jan. 2010 from— | | Seasonally adjusted percent change from— | | |
|---|------------------------------------|--------------------|-----------|--|-----------|--|--------------|--------------|
| | | Dec. 2009 | Jan. 2010 | Jan. 2009 | Dec. 2009 | Oct. to Nov. | Nov. to Dec. | Dec. to Jan. |
| All items | 100.000 | 215.949 | 216.687 | 2.6 | 0.3 | 0.2 | 0.2 | 0.2 |
| All items (1967=100) | - | 646.887 | 649.098 | - | - | - | - | - |
| Food and beverages | 14.795 | 218.049 | 219.223 | -.2 | .5 | .1 | .1 | .2 |
| Food | 13.738 | 217.637 | 218.874 | -.4 | .6 | .1 | .1 | .2 |
| Food at home | 7.801 | 213.359 | 215.404 | -2.0 | 1.0 | .0 | .2 | .4 |
| Cereals and bakery products | 1.108 | 251.019 | 250.725 | -1.5 | -1 | .0 | .4 | -.5 |
| Meats, poultry, fish, and eggs | 1.745 | 201.003 | 201.870 | -3.2 | .4 | .4 | -.1 | .4 |
| Dairy and related products ¹ | .820 | 194.792 | 198.949 | -5.1 | 2.1 | -.7 | .5 | 2.1 |
| Fruits and vegetables | 1.153 | 273.189 | 279.119 | -1.2 | 2.2 | .1 | .4 | 1.3 |
| Nonalcoholic beverages and beverage materials | .952 | 161.216 | 163.684 | -.7 | 1.5 | -2 | .0 | .2 |
| Other food at home | 2.023 | 189.921 | 190.994 | -.8 | .6 | -.1 | .2 | -.3 |
| Sugar and sweets | .295 | 198.712 | 199.777 | 1.2 | .5 | .5 | .3 | -.3 |
| Fats and oils | .232 | 197.391 | 200.220 | -3.2 | 1.4 | -3 | .6 | .2 |
| Other foods | 1.496 | 203.832 | 204.719 | -.8 | .4 | -.2 | .2 | -.3 |
| Other miscellaneous foods ^{1 2} | .439 | 122.422 | 121.564 | -2.0 | -7 | -7 | 1.0 | -.7 |
| Food away from home ¹ | 5.937 | 224.789 | 224.916 | 1.6 | .1 | .2 | .1 | .1 |
| Other food away from home ^{1 2} | .326 | 156.990 | 157.517 | 2.7 | .3 | .0 | .0 | .3 |
| Alcoholic beverages | 1.056 | 222.082 | 222.401 | 1.5 | .1 | .2 | .0 | -.1 |
| Housing | 41.960 | 215.523 | 215.925 | -.5 | .2 | .0 | .0 | -.3 |
| Shelter | 32.289 | 247.863 | 247.950 | -.1 | .0 | -.2 | .0 | -.5 |
| Rent of primary residence ³ | 5.966 | 248.999 | 249.144 | .5 | .1 | -.1 | .0 | .0 |
| Lodging away from home ² | .769 | 122.638 | 125.778 | -5.8 | 2.6 | -1.5 | .1 | -2.1 |
| Owners' equivalent rent of residences ^{3 4} | 25.206 | 256.727 | 256.591 | .4 | -.1 | -.1 | .0 | -.1 |
| Owners' equivalent rent of primary residence ^{3 4} | 23.593 | 256.727 | 256.589 | .4 | -.1 | -.1 | .0 | -.1 |
| Tenants' and household insurance ^{1 2} | .347 | 123.812 | 124.360 | 3.3 | .4 | .0 | 1.3 | .4 |
| Fuels and utilities | 5.081 | 208.760 | 211.381 | -1.8 | 1.3 | 1.2 | -.1 | .5 |
| Household energy | 4.028 | 184.886 | 187.330 | -3.5 | 1.3 | 1.5 | -.2 | .5 |
| Fuel oil and other fuels ¹ | .276 | 262.649 | 280.850 | 13.6 | 6.9 | 6.7 | .9 | 6.9 |
| Gas (piped) and electricity ³ | 3.752 | 188.724 | 190.439 | -4.7 | .9 | 1.1 | -.3 | .0 |
| Water and sewer and trash collection services ² | 1.052 | 165.204 | 166.857 | 6.1 | 1.0 | .1 | .4 | .8 |
| Household furnishings and operations | 4.590 | 127.119 | 127.209 | -1.2 | .1 | -.2 | .0 | -.1 |
| Household operations ^{1 2} | .781 | 150.172 | 149.510 | -.6 | -.4 | .0 | .0 | -.4 |
| Apparel | 3.695 | 119.357 | 116.678 | 1.7 | -2.2 | -.3 | .4 | -.1 |
| Men's and boys' apparel | .903 | 110.633 | 109.762 | -.9 | -.8 | -.4 | -.2 | .2 |
| Women's and girls' apparel | 1.580 | 108.304 | 103.353 | 2.7 | -4.6 | -.7 | .9 | .1 |
| Infants' and toddlers' apparel | .196 | 112.695 | 113.248 | .8 | .5 | -.5 | -.2 | 1.0 |
| Footwear | .721 | 128.492 | 127.205 | 4.0 | -1.0 | .5 | .2 | .3 |
| Transportation | 16.685 | 188.318 | 190.512 | 14.3 | 1.2 | 1.3 | .7 | 1.3 |
| Private transportation | 15.497 | 183.766 | 186.308 | 15.2 | 1.4 | 1.2 | .7 | 1.6 |
| New and used motor vehicles ² | 6.386 | 96.421 | 96.660 | 5.3 | .2 | .8 | .3 | .2 |
| New vehicles | 3.573 | 138.857 | 138.743 | 4.1 | -.1 | .5 | -.2 | -.5 |
| Used cars and trucks | 2.012 | 137.406 | 139.174 | 11.5 | 1.3 | 1.9 | 2.2 | 1.5 |
| Motor fuel | 4.525 | 224.730 | 234.106 | 49.5 | 4.2 | 2.8 | 1.7 | 4.8 |
| Gasoline (all types) | 4.337 | 224.260 | 233.727 | 51.3 | 4.2 | 2.7 | 2.3 | 4.4 |
| Motor vehicle parts and equipment ¹ | .401 | 134.781 | 135.277 | 1.4 | .4 | .4 | .4 | .4 |
| Motor vehicle maintenance and repair ¹ | 1.167 | 245.417 | 245.567 | 1.9 | .1 | .0 | .0 | .1 |
| Public transportation | 1.187 | 245.203 | 241.058 | 2.8 | -1.7 | 2.0 | 1.2 | -1.8 |
| Medical care | 6.513 | 379.516 | 382.688 | 3.5 | .8 | .3 | .1 | .5 |
| Medical care commodities ¹ | 1.611 | 308.221 | 310.494 | 3.5 | .7 | .1 | -.1 | .7 |
| Medical care services | 4.902 | 401.452 | 404.937 | 3.5 | .9 | .3 | .2 | .5 |
| Professional services | 2.796 | 321.827 | 324.397 | 2.8 | .8 | .2 | .2 | .5 |

See footnotes at end of table.

Table 1. Consumer Price Index for All Urban Consumers (CPI-U): U.S. city average, by expenditure category and commodity and service group-Continued

(1982-84=100, unless otherwise noted)

| CPI-U | Relative importance, December 2009 | Unadjusted indexes | | Unadjusted percent change to Jan. 2010 from— | | Seasonally adjusted percent change from— | | |
|--|------------------------------------|--------------------|-----------|--|-----------|--|--------------|--------------|
| | | Dec. 2009 | Jan. 2010 | Jan. 2009 | Dec. 2009 | Oct. to Nov. | Nov. to Dec. | Dec. to Jan. |
| Expenditure category | | | | | | | | |
| Hospital and related services ³ | 1.619 | 581.968 | 588.631 | 6.8 | 1.1 | 0.7 | 0.6 | 0.4 |
| Recreation ² | 6.437 | 113.212 | 113.310 | -.4 | .1 | -.1 | -.3 | -.1 |
| Video and audio ² | 1.894 | 99.873 | 99.940 | -1.4 | .1 | .3 | -.1 | -.2 |
| Education and communication ² | 6.434 | 128.883 | 129.072 | 2.3 | .1 | .0 | .2 | .3 |
| Education ² | 3.035 | 195.672 | 195.850 | 4.6 | .1 | .3 | .4 | .3 |
| Educational books and supplies | .200 | 496.580 | 500.551 | 6.9 | .8 | .7 | .4 | .4 |
| Tuition, other school fees, and childcare | 2.835 | 562.610 | 562.841 | 4.5 | .0 | .2 | .4 | .3 |
| Communication ² | 3.399 | 84.809 | 84.974 | .1 | .2 | -.3 | .1 | .2 |
| Information and information processing ^{1 2} | 3.225 | 81.728 | 81.817 | -.3 | .1 | -.4 | .0 | .1 |
| Telephone services ^{1 2} | 2.392 | 102.707 | 102.729 | .8 | .0 | -.4 | .2 | .0 |
| Information technology, hardware and services ^{1 5} | .833 | 9.423 | 9.457 | -4.7 | .4 | -.4 | -.5 | .4 |
| Personal computers and peripheral equipment ⁶ | .246 | 77.960 | 78.323 | -11.5 | .5 | .0 | -.5 | -.6 |
| Other goods and services | 3.483 | 377.330 | 377.652 | 7.8 | .1 | .4 | .2 | .1 |
| Tobacco and smoking products ¹ | .871 | 783.794 | 786.857 | 29.5 | .4 | 1.0 | .3 | .4 |
| Personal care | 2.612 | 205.823 | 205.789 | 1.3 | .0 | .2 | .1 | -.1 |
| Personal care products ¹ | .688 | 162.275 | 161.627 | -6 | -.4 | -.3 | .3 | -.4 |
| Personal care services ¹ | .642 | 228.343 | 228.629 | 1.3 | .1 | .0 | .0 | .1 |
| Miscellaneous personal services | 1.048 | 348.697 | 349.605 | 2.6 | .3 | .5 | .2 | .1 |
| Commodity and service group | | | | | | | | |
| Commodities | 39.816 | 172.572 | 173.646 | 5.6 | .6 | .5 | .3 | .8 |
| Food and beverages | 14.795 | 218.049 | 219.223 | -.2 | .5 | .1 | .1 | .2 |
| Commodities less food and beverages | 25.021 | 148.441 | 149.439 | 9.5 | .7 | .7 | .4 | 1.1 |
| Nondurables less food and beverages | 15.044 | 185.689 | 187.484 | 15.1 | 1.0 | 1.3 | .7 | 1.6 |
| Apparel | 3.695 | 119.357 | 116.678 | 1.7 | -2.2 | -.3 | .4 | -.1 |
| Nondurables less food, beverages, and apparel | 11.349 | 231.169 | 235.821 | 20.0 | 2.0 | 1.6 | .8 | 2.3 |
| Durables | 9.978 | 111.477 | 111.731 | 2.5 | .2 | .3 | .3 | .0 |
| Services | 60.184 | 259.055 | 259.459 | .7 | .2 | .1 | .1 | -.2 |
| Rent of shelter ⁴ | 31.942 | 258.303 | 258.382 | -.2 | .0 | -.1 | .0 | -.3 |
| Tenants' and household insurance ^{1 2} | .347 | 123.812 | 124.360 | 3.3 | .4 | .0 | 1.3 | .4 |
| Gas (piped) and electricity ³ | 3.752 | 188.724 | 190.439 | -4.7 | .9 | 1.1 | -.3 | .0 |
| Water and sewer and trash collection services ² | 1.052 | 165.204 | 166.857 | 6.1 | 1.0 | .1 | .4 | .8 |
| Household operations ^{1 2} | .781 | 150.172 | 149.510 | -6 | -.4 | .0 | .0 | -.4 |
| Transportation services | 6.060 | 256.014 | 255.216 | 3.3 | -.3 | .5 | .3 | -.3 |
| Medical care services | 4.902 | 401.452 | 404.937 | 3.5 | .9 | .3 | .2 | .5 |
| Other services | 11.347 | 306.436 | 306.916 | 2.1 | .2 | .1 | .1 | .2 |
| Special indexes | | | | | | | | |
| All items less food | 86.262 | 215.703 | 216.362 | 3.1 | .3 | .3 | .2 | .2 |
| All items less shelter | 67.711 | 205.888 | 206.892 | 4.0 | .5 | .4 | .2 | .5 |
| All items less medical care | 93.487 | 207.860 | 208.499 | 2.6 | .3 | .2 | .2 | .1 |
| Commodities less food | 26.078 | 151.052 | 152.035 | 9.2 | .7 | .7 | .4 | 1.1 |
| Nondurables less food | 16.100 | 187.864 | 189.578 | 14.0 | .9 | 1.3 | .6 | 1.6 |
| Nondurables less food and apparel | 12.405 | 229.250 | 233.498 | 18.1 | 1.9 | 1.6 | .7 | 2.1 |
| Nondurables | 29.838 | 202.064 | 203.588 | 6.8 | .8 | .6 | .3 | .9 |
| Services less rent of shelter ⁴ | 28.243 | 279.896 | 280.730 | 1.6 | .3 | .3 | .2 | .1 |
| Services less medical care services | 55.282 | 247.793 | 248.023 | .4 | .1 | .1 | .1 | -.2 |
| Energy | 8.553 | 202.301 | 208.026 | 19.1 | 2.8 | 2.2 | .8 | 2.8 |
| All items less energy | 91.447 | 219.048 | 219.287 | 1.2 | .1 | .0 | .1 | -.1 |
| All items less food and energy | 77.708 | 220.025 | 220.086 | 1.6 | .0 | .0 | .1 | -.1 |
| Commodities less food and energy commodities | 21.276 | 143.383 | 143.125 | 2.9 | -.2 | .2 | .1 | .1 |
| Energy commodities | 4.801 | 228.186 | 238.069 | 46.6 | 4.3 | 3.0 | 1.6 | 4.9 |
| Services less energy services | 56.432 | 266.237 | 266.519 | 1.0 | .1 | .0 | .1 | -.2 |
| Purchasing power of the consumer dollar (1982-84=\$1.00) | - | \$.463 | \$.461 | - | - | - | - | - |
| Purchasing power of the consumer dollar (1967=\$1.00) | - | \$.155 | \$.154 | - | - | - | - | - |

¹ Not seasonally adjusted.

² Indexes on a December 1997=100 base.

³ This index series was calculated using a Laspeyres estimator. All other item stratum index series were calculated using a geometric means estimator.

⁴ Indexes on a December 1982=100 base.

⁵ Indexes on a December 1988=100 base.

⁶ Indexes on a December 2007=100 base.

- Data not available.

NOTE: Index applies to a month as a whole, not to any specific date.

Table 2. Consumer Price Index for All Urban Consumers (CPI-U): Seasonally adjusted U.S. city average, by expenditure category and commodity and service group

(1982-84=100, unless otherwise noted)

| CPI-U | Seasonally adjusted indexes | | | | Seasonally adjusted annual rate percent change for | | | | | |
|---|-----------------------------|--------------|--------------|--------------|--|--------------|--------------|-----------------|--------------|--------------|
| | | | | | 3 months ended— | | | 6 months ended— | | |
| | Oct. 2009 | Nov. 2009 | Dec. 2009 | Jan. 2010 | Apr. 2009 | July 2009 | Oct. 2009 | Jan. 2010 | July 2009 | Jan. 2010 |
| Expenditure category | | | | | | | | | | |
| All items | 216.357 | 216.859 | 217.224 | 217.587 | 1.6 | 3.7 | 3.0 | 2.3 | 2.7 | 2.6 |
| Food and beverages | 217.777 | 217.952 | 218.253 | 218.731 | -1.4 | -1.4 | .1 | 1.8 | -1.4 | .9 |
| Food | 217.335 | 217.482 | 217.801 | 218.339 | -1.5 | -1.8 | .0 | 1.9 | -1.6 | .9 |
| Food at home | 213.262 | 213.206 | 213.655 | 214.479 | -4.9 | -3.8 | -1.4 | 2.3 | -4.3 | .5 |
| Cereals and bakery products | 251.701 | 251.806 | 252.805 | 251.452 | -4.2 | -1.1 | -.1 | -.4 | -2.7 | -.2 |
| Meats, poultry, fish, and eggs | 200.135 | 200.929 | 200.779 | 201.682 | -4.1 | -7.9 | -3.6 | 3.1 | -6.0 | -3 |
| Dairy and related products ¹ | 195.360 | 193.914 | 194.792 | 198.949 | -21.8 | -7.9 | 4.7 | 7.6 | -15.1 | 6.1 |
| Fruits and vegetables | 268.008 | 268.326 | 269.428 | 272.854 | .2 | -3.0 | -8.8 | 7.4 | -1.4 | -1.0 |
| Nonalcoholic beverages and beverage materials | 162.504 | 162.164 | 162.202 | 162.499 | -1.1 | -1.3 | -.5 | .0 | -1.2 | -.3 |
| Other food at home | 191.136 | 190.868 | 191.326 | 190.812 | -2.5 | -1.4 | 1.5 | -.7 | -2.0 | .4 |
| Sugar and sweets | 197.934 | 198.960 | 199.524 | 198.862 | -.6 | -2.9 | 6.7 | 1.9 | -1.8 | 4.2 |
| Fats and oils | 198.562 | 197.875 | 199.004 | 199.460 | -6.8 | -4.3 | -3.4 | 1.8 | -5.6 | -.8 |
| Other foods | 205.588 | 205.086 | 205.455 | 204.762 | -2.2 | -.6 | 1.3 | -1.6 | -1.4 | -.2 |
| Other miscellaneous foods ^{1 2} | 122.112 | 121.263 | 122.422 | 121.564 | -3.6 | -2.9 | .4 | -1.8 | -3.2 | -.7 |
| Food away from home ¹ | 224.224 | 224.633 | 224.789 | 224.916 | 2.9 | .8 | 1.6 | 1.2 | 1.8 | 1.4 |
| Other food away from home ^{1 2} | 157.056 | 157.027 | 156.990 | 157.517 | 4.5 | 3.8 | 1.2 | 1.2 | 4.2 | 1.2 |
| Alcoholic beverages | 222.193 | 222.717 | 222.792 | 222.488 | .3 | 2.9 | 2.2 | .5 | 1.6 | 1.4 |
| Housing | 216.926 | 216.881 | 216.880 | 216.185 | -.5 | -1.0 | .4 | -1.4 | -.7 | -.5 |
| Shelter | 249.644 | 249.173 | 249.216 | 248.029 | .8 | .1 | .3 | -2.6 | .5 | -1.1 |
| Rent of primary residence ³ | 248.946 | 248.786 | 248.788 | 248.885 | 1.9 | .6 | -.5 | -.1 | 1.2 | -.3 |
| Lodging away from home ² | 134.293 | 132.339 | 132.480 | 129.698 | -10.4 | -6.5 | 5.4 | -13.0 | -8.4 | -4.2 |
| Owners' equivalent rent of residences ^{3 4} | 256.952 | 256.721 | 256.708 | 256.509 | 1.8 | .7 | -.1 | -.7 | 1.2 | -.4 |
| Owners' equivalent rent of primary residence ^{3 4} | 256.952 | 256.721 | 256.708 | 256.507 | 1.8 | .7 | -.1 | -.7 | 1.2 | -.4 |
| Tenants' and household insurance ^{1 2} | 122.184 | 122.243 | 123.812 | 124.360 | .9 | 2.1 | 3.0 | 7.3 | 1.5 | 5.1 |
| Fuels and utilities | 209.288 | 211.881 | 211.685 | 212.757 | -9.5 | -8.0 | 4.9 | 6.8 | -8.8 | 5.8 |
| Household energy | 185.670 | 188.492 | 188.120 | 188.982 | -12.5 | -11.1 | 4.3 | 7.3 | -11.8 | 5.8 |
| Fuel oil and other fuels ¹ | 243.936 | 260.250 | 262.649 | 280.850 | -27.5 | 3.7 | 26.1 | 75.7 | -13.3 | 48.9 |
| Gas (piped) and electricity ³ | 190.640 | 192.829 | 192.284 | 192.250 | -11.4 | -12.1 | 3.0 | 3.4 | -11.7 | 3.2 |
| Water and sewer and trash collection services ² | 164.449 | 164.557 | 165.138 | 166.463 | 5.6 | 6.6 | 7.2 | 5.0 | 6.1 | 6.1 |
| Household furnishings and operations | 127.905 | 127.605 | 127.577 | 127.392 | 1.3 | -.7 | -3.8 | -1.6 | .3 | -2.7 |
| Household operations ^{1 2} | 150.184 | 150.135 | 150.172 | 149.510 | 1.0 | -2.2 | .5 | -1.8 | -.6 | -.6 |
| Apparel | 120.555 | 120.247 | 120.684 | 120.613 | 3.3 | 3.8 | -.3 | .2 | 3.6 | -.1 |
| Men's and boys' apparel | 112.792 | 112.382 | 112.109 | 112.296 | 1.6 | -1.8 | -1.8 | -1.7 | -.1 | -1.8 |
| Women's and girls' apparel | 108.890 | 108.114 | 109.085 | 109.196 | 2.7 | 8.3 | -1.1 | 1.1 | 5.5 | .0 |
| Infants' and toddlers' apparel | 114.531 | 113.941 | 113.668 | 114.757 | 3.7 | 1.5 | -2.6 | .8 | 2.6 | -.9 |
| Footwear | 127.996 | 128.697 | 128.979 | 129.343 | 5.1 | 5.3 | 1.1 | 4.3 | 5.2 | 2.7 |
| Transportation | 187.266 | 189.647 | 191.018 | 193.593 | 4.8 | 25.3 | 15.6 | 14.2 | 14.6 | 14.9 |
| Private transportation | 182.858 | 185.085 | 186.356 | 189.316 | 6.2 | 27.1 | 15.6 | 14.9 | 16.2 | 15.2 |
| New and used motor vehicles ² | 95.274 | 95.996 | 96.255 | 96.422 | 3.8 | 5.1 | 7.8 | 4.9 | 4.5 | 6.4 |
| New vehicles | 137.833 | 138.532 | 138.214 | 137.470 | 7.5 | 7.4 | 2.9 | -1.0 | 7.4 | .9 |
| Used cars and trucks | 132.498 | 135.010 | 137.922 | 139.990 | -11.8 | 7.6 | 30.5 | 24.6 | -2.6 | 27.5 |
| Motor fuel | 226.620 | 232.878 | 236.762 | 248.088 | 13.7 | 120.8 | 38.5 | 43.6 | 58.4 | 41.1 |
| Gasoline (all types) | 225.974 | 232.144 | 237.449 | 247.897 | 19.0 | 121.1 | 37.5 | 44.8 | 62.2 | 41.1 |
| Motor vehicle parts and equipment ¹ | 133.650 | 134.234 | 134.781 | 135.277 | 3.7 | -2.7 | -.2 | 5.0 | .5 | 2.3 |
| Motor vehicle maintenance and repair ¹ | 245.393 | 245.511 | 245.417 | 245.567 | 2.6 | .6 | 3.9 | .3 | 1.6 | 2.1 |
| Public transportation | 241.593 | 246.516 | 249.551 | 245.058 | -11.8 | 3.1 | 16.3 | 5.9 | -4.7 | 11.0 |
| Medical care | 379.184 | 380.212 | 380.732 | 382.737 | 3.9 | 2.6 | 3.7 | 3.8 | 3.2 | 3.7 |
| Medical care commodities ¹ | 308.379 | 308.546 | 308.221 | 310.494 | 5.4 | .3 | 5.6 | 2.8 | 2.8 | 4.2 |
| Medical care services | 400.912 | 402.295 | 403.177 | 405.006 | 3.4 | 3.3 | 3.0 | 4.1 | 3.3 | 3.6 |
| Professional services | 321.936 | 322.528 | 323.045 | 324.784 | 1.0 | 3.8 | 2.7 | 3.6 | 2.4 | 3.1 |

See footnotes at end of table.

Table 2. Consumer Price Index for All Urban Consumers (CPI-U): Seasonally adjusted U.S. city average, by expenditure category and commodity and service group-Continued

(1982-84=100, unless otherwise noted)

| CPI-U | Seasonally adjusted indexes | | | | Seasonally adjusted annual rate percent change for | | | | | |
|--|-----------------------------|--------------|--------------|--------------|--|--------------|--------------|-----------------|--------------|--------------|
| | | | | | 3 months ended— | | | 6 months ended— | | |
| | Oct. 2009 | Nov. 2009 | Dec. 2009 | Jan. 2010 | Apr. 2009 | July 2009 | Oct. 2009 | Jan. 2010 | July 2009 | Jan. 2010 |
| Expenditure category | | | | | | | | | | |
| Hospital and related services ³ | 577.468 | 581.662 | 585.044 | 587.561 | 9.0 | 5.2 | 5.8 | 7.2 | 7.1 | 6.5 |
| Recreation ² | 114.130 | 113.968 | 113.598 | 113.524 | .2 | 1.6 | -1.4 | -2.1 | .9 | -1.8 |
| Video and audio ² | 100.282 | 100.563 | 100.440 | 100.255 | .4 | -6 | -5.1 | -.1 | -.1 | -2.6 |
| Education and communication ² | 128.286 | 128.255 | 128.528 | 128.872 | 2.7 | 2.9 | 1.9 | 1.8 | 2.8 | 1.8 |
| Education ² | 193.324 | 193.869 | 194.587 | 195.209 | 5.2 | 5.6 | 3.8 | 4.0 | 5.4 | 3.9 |
| Educational books and supplies | 491.256 | 494.815 | 496.737 | 498.880 | 6.3 | 9.7 | 5.1 | 6.4 | 8.0 | 5.7 |
| Tuition, other school fees, and childcare | 555.802 | 557.176 | 559.232 | 561.001 | 5.2 | 5.3 | 3.7 | 3.8 | 5.2 | 3.7 |
| Communication ² | 85.051 | 84.770 | 84.815 | 84.974 | .3 | .3 | .0 | -.4 | .3 | -.2 |
| Information and information processing ^{1 2} | 81.978 | 81.688 | 81.728 | 81.817 | .3 | -.5 | -.1 | -.8 | -.1 | -.4 |
| Telephone services ^{1 2} | 102.891 | 102.528 | 102.707 | 102.729 | .8 | 2.3 | 1.0 | -.6 | 1.5 | .2 |
| Information technology, hardware and services ^{1 5} | 9.501 | 9.467 | 9.423 | 9.457 | -1.5 | -10.8 | -4.2 | -1.8 | -6.3 | -3.0 |
| Personal computers and peripheral equipment ⁶ | 78.765 | 78.784 | 78.356 | 77.925 | -14.9 | -15.5 | -11.0 | -4.2 | -15.2 | -7.7 |
| Other goods and services | 375.382 | 376.960 | 377.651 | 377.853 | 24.2 | 3.4 | 2.5 | 2.7 | 13.3 | 2.6 |
| Tobacco and smoking products ¹ | 773.758 | 781.538 | 783.794 | 786.857 | 123.2 | 11.5 | 5.8 | 6.9 | 57.8 | 6.4 |
| Personal care | 205.360 | 205.770 | 206.065 | 205.935 | 2.4 | .6 | 1.3 | 1.1 | 1.5 | 1.2 |
| Personal care products ¹ | 162.257 | 161.753 | 162.275 | 161.627 | 3.0 | -2.2 | -1.5 | -1.5 | .4 | -1.5 |
| Personal care services ¹ | 228.465 | 228.358 | 228.343 | 228.629 | 3.9 | -1.0 | 2.0 | .3 | 1.4 | 1.2 |
| Miscellaneous personal services | 347.462 | 349.284 | 349.935 | 350.113 | 1.3 | 3.1 | 3.1 | 3.1 | 2.2 | 3.1 |
| Commodity and service group | | | | | | | | | | |
| Commodities | 172.488 | 173.284 | 173.830 | 175.196 | 3.3 | 9.0 | 4.9 | 6.4 | 6.1 | 5.7 |
| Food and beverages | 217.777 | 217.952 | 218.253 | 218.731 | -1.4 | -1.4 | .1 | 1.8 | -1.4 | .9 |
| Commodities less food and beverages | 148.437 | 149.463 | 150.092 | 151.759 | 6.5 | 16.1 | 8.0 | 9.3 | 11.2 | 8.6 |
| Nondurables less food and beverages | 186.035 | 188.385 | 189.796 | 192.765 | 6.3 | 27.9 | 11.9 | 15.3 | 16.6 | 13.6 |
| Apparel | 120.555 | 120.247 | 120.684 | 120.613 | 3.3 | 3.8 | -.3 | .2 | 3.6 | -.1 |
| Nondurables less food, beverages, and apparel | 231.094 | 234.760 | 236.606 | 241.982 | 7.6 | 38.2 | 16.0 | 20.2 | 22.0 | 18.1 |
| Durables | 110.891 | 111.269 | 111.607 | 111.565 | 1.3 | 2.3 | 3.9 | 2.5 | 1.8 | 3.2 |
| Services | 259.970 | 260.129 | 260.290 | 259.716 | .5 | .3 | 1.7 | -.4 | .4 | .6 |
| Rent of shelter ⁴ | 260.220 | 259.852 | 259.963 | 259.168 | .5 | -.1 | .6 | -1.6 | .2 | -.5 |
| Tenants' and household insurance ^{1 2} | 122.184 | 122.243 | 123.812 | 124.360 | .9 | 2.1 | 3.0 | 7.3 | 1.5 | 5.1 |
| Gas (piped) and electricity ³ | 190.640 | 192.829 | 192.284 | 192.250 | -11.4 | -12.1 | 3.0 | 3.4 | -11.7 | 3.2 |
| Water and sewer and trash collection services ² | 164.449 | 164.557 | 165.138 | 166.463 | 5.6 | 6.6 | 7.2 | 5.0 | 6.1 | 6.1 |
| Household operations ^{1 2} | 150.184 | 150.135 | 150.172 | 149.510 | 1.0 | -2.2 | .5 | -1.8 | -.6 | -.6 |
| Transportation services | 254.411 | 255.733 | 256.494 | 255.735 | 2.6 | 1.2 | 7.3 | 2.1 | 1.9 | 4.7 |
| Medical care services | 400.912 | 402.295 | 403.177 | 405.006 | 3.4 | 3.3 | 3.0 | 4.1 | 3.3 | 3.6 |
| Other services | 305.987 | 306.204 | 306.521 | 306.985 | 1.9 | 3.6 | 1.6 | 1.3 | 2.7 | 1.5 |
| Special indexes | | | | | | | | | | |
| All items less food | 216.227 | 216.787 | 217.160 | 217.489 | 2.1 | 4.7 | 3.5 | 2.4 | 3.4 | 2.9 |
| All items less shelter | 205.753 | 206.649 | 207.147 | 208.128 | 2.0 | 5.6 | 4.3 | 4.7 | 3.8 | 4.5 |
| All items less medical care | 208.293 | 208.770 | 209.126 | 209.424 | 1.5 | 3.8 | 2.9 | 2.2 | 2.6 | 2.6 |
| Commodities less food | 151.051 | 152.066 | 152.681 | 154.302 | 6.2 | 15.5 | 7.7 | 8.9 | 10.8 | 8.3 |
| Nondurables less food | 187.923 | 190.304 | 191.439 | 194.517 | 5.6 | 26.5 | 10.2 | 14.8 | 15.6 | 12.5 |
| Nondurables less food and apparel | 228.887 | 232.549 | 234.233 | 239.081 | 6.7 | 34.3 | 14.1 | 19.0 | 19.7 | 16.5 |
| Nondurables | 202.443 | 203.673 | 204.280 | 206.144 | 2.4 | 10.3 | 7.1 | 7.5 | 6.3 | 7.3 |
| Services less rent of shelter ⁴ | 279.534 | 280.508 | 281.171 | 281.417 | .1 | .1 | 3.6 | 2.7 | .1 | 3.1 |
| Services less medical care services | 248.746 | 248.944 | 249.198 | 248.690 | .2 | -.3 | 1.8 | -.1 | .0 | .9 |
| Energy | 203.606 | 208.041 | 209.699 | 215.536 | -1.6 | 38.1 | 21.0 | 25.6 | 16.5 | 23.2 |
| All items less energy | 219.365 | 219.462 | 219.695 | 219.524 | 1.9 | 1.1 | 1.4 | .3 | 1.5 | .9 |
| All items less food and energy | 220.459 | 220.546 | 220.764 | 220.463 | 2.5 | 1.7 | 1.7 | .0 | 2.1 | .8 |
| Commodities less food and energy commodities | 143.257 | 143.513 | 143.702 | 143.863 | 5.4 | 2.8 | 2.0 | 1.7 | 4.1 | 1.8 |
| Energy commodities | 229.002 | 235.831 | 239.662 | 251.449 | 10.0 | 110.6 | 37.8 | 45.4 | 52.2 | 41.5 |
| Services less energy services | 267.055 | 267.018 | 267.248 | 266.630 | 1.5 | 1.3 | 1.6 | -.6 | 1.4 | .5 |

¹ Not seasonally adjusted.

² Indexes on a December 1997=100 base.

³ This index series was calculated using a Laspeyres estimator. All other item stratum index series were calculated using a geometric means estimator.

⁴ Indexes on a December 1982=100 base.

⁵ Indexes on a December 1988=100 base.

⁶ Indexes on a December 2007=100 base.

NOTE: Index applies to a month as a whole, not to any specific date.

Table 3. Consumer Price Index for All Urban Consumers (CPI-U): Selected areas, all items index

(1982-84=100, unless otherwise noted)

| CPI-U | Pricing schedule 1 | All items | | | | | | | | | |
|--|-----------------------|-----------|-----------|-----------|-----------|----------------------------------|-----------|-----------|----------------------------------|-----------|-----------|
| | | Indexes | | | | Percent change to Jan.2010 from— | | | Percent change to Dec.2009 from— | | |
| | | Oct. 2009 | Nov. 2009 | Dec. 2009 | Jan. 2010 | Jan. 2009 | Nov. 2009 | Dec. 2009 | Dec. 2008 | Oct. 2009 | Nov. 2009 |
| U.S. city average | M | 216.177 | 216.330 | 215.949 | 216.687 | 2.6 | 0.2 | 0.3 | 2.7 | -0.1 | -0.2 |
| Region and area size² | | | | | | | | | | | |
| Northeast urban | M | 231.304 | 231.708 | 231.462 | 232.294 | 3.0 | .3 | .4 | 2.8 | .1 | -1 |
| Size A - More than 1,500,000 | M | 233.415 | 233.785 | 233.475 | 234.109 | 2.7 | .1 | .3 | 2.5 | .0 | -1 |
| Size B/C - 50,000 to 1,500,000 ³ | M | 137.348 | 137.646 | 137.597 | 138.416 | 3.8 | .6 | .6 | 3.6 | .2 | .0 |
| Midwest urban | M | 205.706 | 206.247 | 205.613 | 206.564 | 2.9 | .2 | .5 | 3.0 | .0 | -3 |
| Size A - More than 1,500,000 | M | 206.625 | 207.277 | 206.399 | 207.325 | 2.6 | .0 | .4 | 3.0 | -1 | -4 |
| Size B/C - 50,000 to 1,500,000 ³ | M | 131.724 | 131.952 | 131.742 | 132.417 | 2.9 | .4 | .5 | 2.9 | .0 | -2 |
| Size D - Nonmetropolitan (less than 50,000) | M | 202.499 | 203.047 | 202.738 | 203.490 | 3.9 | .2 | .4 | 3.8 | .1 | -2 |
| South urban | M | 209.292 | 209.738 | 209.476 | 210.056 | 2.8 | .2 | .3 | 2.9 | .1 | -1 |
| Size A - More than 1,500,000 | M | 211.152 | 211.424 | 210.971 | 211.762 | 2.3 | .2 | .4 | 2.2 | -1 | -2 |
| Size B/C - 50,000 to 1,500,000 ³ | M | 133.035 | 133.342 | 133.252 | 133.517 | 3.0 | .1 | .2 | 3.2 | .2 | -1 |
| Size D - Nonmetropolitan (less than 50,000) | M | 212.423 | 213.372 | 213.159 | 213.873 | 3.9 | .2 | .3 | 4.3 | .3 | -1 |
| West urban | M | 220.447 | 219.728 | 219.307 | 219.989 | 1.9 | .1 | .3 | 2.2 | -5 | -2 |
| Size A - More than 1,500,000 | M | 224.372 | 223.489 | 223.058 | 223.852 | 1.8 | .2 | .4 | 2.0 | -6 | -2 |
| Size B/C - 50,000 to 1,500,000 ³ | M | 133.618 | 133.335 | 133.132 | 133.366 | 2.1 | .0 | .2 | 2.6 | -4 | -2 |
| Size classes | | | | | | | | | | | |
| A ⁴ | M | 197.670 | 197.697 | 197.246 | 197.948 | 2.3 | .1 | .4 | 2.4 | -2 | -2 |
| B/C ³ | M | 133.489 | 133.663 | 133.535 | 133.954 | 2.9 | .2 | .3 | 3.1 | .0 | -1 |
| D | M | 209.139 | 209.567 | 209.192 | 209.984 | 3.2 | .2 | .4 | 3.4 | .0 | -2 |
| Selected local areas⁵ | | | | | | | | | | | |
| Chicago-Gary-Kenosha, IL-IN-WI | M | 211.708 | 212.206 | 211.185 | 212.104 | 2.2 | .0 | .4 | 2.5 | -2 | -5 |
| Los Angeles-Riverside-Orange County, CA ... | M | 225.264 | 224.317 | 223.643 | 224.610 | 1.8 | .1 | .4 | 1.8 | -7 | -3 |
| New York-Northern N.J.-Long Island, NY-NJ-CT-PA | M | 238.380 | 238.777 | 238.427 | 238.970 | 2.4 | .1 | .2 | 2.3 | .0 | -1 |
| Boston-Brockton-Nashua, MA-NH-ME-CT | 1 | - | 236.589 | - | 237.266 | 2.8 | .3 | - | - | - | - |
| Cleveland-Akron, OH | 1 | - | 201.471 | - | 203.037 | 2.4 | .8 | - | - | - | - |
| Dallas-Fort Worth, TX | 1 | - | 201.958 | - | 202.106 | 1.8 | .1 | - | - | - | - |
| Washington-Baltimore, DC-MD-VA-WV ⁶ | 1 | - | 140.718 | - | 141.124 | 2.6 | .3 | - | - | - | - |
| Atlanta, GA | 2 | 201.068 | - | 200.456 | - | - | - | - | 1.8 | -3 | - |
| Detroit-Ann Arbor-Flint, MI | 2 | 205.079 | - | 203.880 | - | - | - | - | 3.0 | -6 | - |
| Houston-Galveston-Brazoria, TX | 2 | 191.608 | - | 190.932 | - | - | - | - | 2.7 | -4 | - |
| Miami-Fort Lauderdale, FL | 2 | 222.416 | - | 222.943 | - | - | - | - | 2.1 | .2 | - |
| Philadelphia-Wilmington-Atlantic City, PA-NJ-DE-MD | 2 | 224.787 | - | 224.800 | - | - | - | - | 3.0 | .0 | - |
| San Francisco-Oakland-San Jose, CA | 2 | 226.051 | - | 224.239 | - | - | - | - | 2.6 | -8 | - |
| Seattle-Tacoma-Bremerton, WA | 2 | 226.277 | - | 225.596 | - | - | - | - | 1.4 | -3 | - |

¹ Foods, fuels, and several other items priced every month in all areas; most other goods and services priced as indicated:

M - Every month.

1 - January, March, May, July, September, and November.

2 - February, April, June, August, October, and December.

² Regions defined as the four Census regions. See technical notes.

³ Indexes on a December 1996=100 base.

⁴ Indexes on a December 1986=100 base.

⁵ In addition, the following metropolitan areas are published semiannually and appear in Tables 34 and 39 of the January and July issues of the CPI Detailed Report: Anchorage, AK; Cincinnati-Hamilton, OH-KY-IN; Denver-Boulder-Greeley, CO; Honolulu, HI; Kansas City, MO-KS; Milwaukee-Racine, WI; Minneapolis-St. Paul, MN-WI; Phoenix-Mesa, AZ; Pittsburgh, PA; Portland-Salem, OR-WA; St. Louis, MO-IL; San Diego, CA;

Tampa-St. Petersburg-Clearwater, FL.

⁶ Indexes on a November 1996=100 base.

- Data not available.

NOTE: Local area indexes are byproducts of the national CPI program. Each local index has a smaller sample size than the national index and is, therefore, subject to substantially more sampling and other measurement error. As a result, local area indexes show greater volatility than the national index, although their long-term trends are similar. Therefore, the Bureau of Labor Statistics strongly urges users to consider adopting the national average CPI for use in their escalator clauses.

NOTE: Index applies to a month as a whole, not to any specific date.

Table 4. Consumer Price Index for Urban Wage Earners and Clerical Workers (CPI-W): U.S. city average, by expenditure category and commodity and service group

(1982-84=100, unless otherwise noted)

| CPI-W Expenditure category | Relative importance, December 2009 | Unadjusted indexes | | Unadjusted percent change to Jan. 2010 from— | | Seasonally adjusted percent change from— | | |
|---|------------------------------------|--------------------|-----------|--|-----------|--|--------------|--------------|
| | | Dec. 2009 | Jan. 2010 | Jan. 2009 | Dec. 2009 | Oct. to Nov. | Nov. to Dec. | Dec. to Jan. |
| All items | 100.000 | 211.703 | 212.568 | 3.3 | 0.4 | 0.2 | 0.2 | 0.3 |
| All items (1967=100) | - | 630.600 | 633.176 | - | - | - | - | - |
| Food and beverages | 16.425 | 217.186 | 218.354 | -.4 | .5 | .1 | .1 | .2 |
| Food | 15.333 | 216.679 | 217.900 | -.5 | .6 | .1 | .2 | .2 |
| Food at home | 8.900 | 212.041 | 214.049 | -2.0 | .9 | -1.1 | .2 | .4 |
| Cereals and bakery products | 1.257 | 251.570 | 251.195 | -1.5 | -.1 | .1 | .3 | -.6 |
| Meats, poultry, fish, and eggs | 2.144 | 200.623 | 201.411 | -3.2 | .4 | -.3 | .0 | .4 |
| Dairy and related products ¹ | .898 | 193.546 | 197.663 | -5.2 | 2.1 | -7.7 | .4 | 2.1 |
| Fruits and vegetables | 1.223 | 270.279 | 276.025 | -1.4 | 2.1 | .1 | .5 | 1.2 |
| Nonalcoholic beverages and beverage materials | 1.123 | 160.745 | 163.439 | -.7 | 1.7 | -.3 | .1 | .2 |
| Other food at home | 2.254 | 189.197 | 190.354 | -.7 | .6 | -2.3 | .3 | -.2 |
| Sugar and sweets | .321 | 197.258 | 198.694 | 1.4 | .7 | .6 | .1 | -.2 |
| Fats and oils | .259 | 198.165 | 200.741 | -3.2 | 1.3 | -.4 | .6 | .2 |
| Other foods | 1.674 | 203.972 | 204.957 | -.7 | .5 | -.3 | .2 | -.3 |
| Other miscellaneous foods ^{1 2} | .472 | 122.796 | 122.051 | -1.9 | -.6 | -.8 | .9 | -.6 |
| Food away from home ¹ | 6.433 | 224.940 | 225.015 | 1.6 | .0 | .2 | .1 | .0 |
| Other food away from home ^{1 2} | .321 | 156.830 | 157.670 | 2.8 | .5 | .0 | .0 | .5 |
| Alcoholic beverages | 1.092 | 223.168 | 223.565 | 1.9 | .2 | .5 | .0 | -.1 |
| Housing | 39.753 | 212.142 | 212.529 | -.3 | .2 | .0 | .0 | -.1 |
| Shelter | 30.171 | 241.991 | 242.019 | .2 | .0 | -.1 | .0 | -.3 |
| Rent of primary residence ³ | 8.476 | 247.465 | 247.574 | .4 | .0 | -.1 | .0 | .0 |
| Lodging away from home ² | .432 | 124.222 | 127.150 | -5.3 | 2.4 | -1.2 | -.1 | -2.0 |
| Owners' equivalent rent of residences ^{3 4} | 20.959 | 232.603 | 232.463 | .4 | -.1 | -.1 | .0 | -.1 |
| Owners' equivalent rent of primary residence ^{3 4} | 20.218 | 232.603 | 232.463 | .4 | -.1 | -.1 | .0 | -.1 |
| Tenants' and household insurance ^{1 2} | .303 | 124.415 | 125.299 | 3.8 | .7 | .1 | 1.3 | .7 |
| Fuels and utilities | 5.632 | 207.329 | 209.691 | -2.0 | 1.1 | 1.1 | -.1 | .6 |
| Household energy | 4.517 | 182.701 | 184.843 | -3.7 | 1.2 | 1.3 | -.3 | .6 |
| Fuel oil and other fuels ¹ | .271 | 265.130 | 284.061 | 12.7 | 7.1 | 6.6 | 1.1 | 7.1 |
| Gas (piped) and electricity ³ | 4.246 | 187.125 | 188.607 | -4.6 | .8 | 1.0 | -.3 | .2 |
| Water and sewer and trash collection services ² | 1.114 | 165.808 | 167.473 | 6.2 | 1.0 | .2 | .4 | .8 |
| Household furnishings and operations | 3.950 | 123.187 | 123.339 | -.9 | .1 | -.2 | .0 | -.1 |
| Household operations ^{1 2} | .369 | 152.486 | 151.499 | -.5 | -.6 | -.4 | -.2 | -.6 |
| Apparel | 3.788 | 118.984 | 116.310 | 1.2 | -2.2 | -.3 | .2 | .0 |
| Men's and boys' apparel | .945 | 110.856 | 109.893 | -1.8 | -.9 | -.5 | -.5 | .0 |
| Women's and girls' apparel | 1.568 | 107.819 | 102.860 | 2.1 | -4.6 | -.7 | .9 | .1 |
| Infants' and toddlers' apparel | .285 | 115.754 | 117.028 | 2.0 | 1.1 | -.4 | -.1 | 1.6 |
| Footwear | .781 | 128.637 | 127.267 | 3.7 | -1.1 | .3 | .2 | .1 |
| Transportation | 18.647 | 186.839 | 189.544 | 16.1 | 1.4 | 1.1 | 1.1 | 1.7 |
| Private transportation | 17.881 | 183.565 | 186.457 | 16.7 | 1.6 | 1.0 | 1.0 | 1.8 |
| New and used motor vehicles ² | 6.952 | 95.072 | 95.464 | 6.3 | .4 | 1.0 | .6 | .3 |
| New vehicles | 3.385 | 139.962 | 139.857 | 4.0 | -.1 | .5 | -.2 | -.5 |
| Used cars and trucks | 2.944 | 138.242 | 140.023 | 11.6 | 1.3 | 1.9 | 2.2 | 1.5 |
| Motor fuel | 5.774 | 225.584 | 235.083 | 49.5 | 4.2 | 1.7 | 2.2 | 4.9 |
| Gasoline (all types) | 5.530 | 225.223 | 234.825 | 51.3 | 4.3 | 2.9 | 2.4 | 4.4 |
| Motor vehicle parts and equipment ¹ | .472 | 134.892 | 135.383 | 1.3 | .4 | .4 | .4 | .4 |
| Motor vehicle maintenance and repair ¹ | 1.180 | 247.812 | 247.975 | 1.8 | .1 | .1 | -.1 | .1 |
| Public transportation | .766 | 243.453 | 239.739 | 3.1 | -1.5 | 1.8 | 1.3 | -1.8 |
| Medical care | 5.261 | 380.302 | 383.443 | 3.6 | .8 | .3 | .2 | .5 |
| Medical care commodities ¹ | 1.301 | 299.777 | 301.890 | 3.5 | .7 | .1 | -.1 | .7 |
| Medical care services | 3.961 | 403.791 | 407.286 | 3.7 | .9 | .4 | .3 | .5 |
| Professional services | 2.195 | 324.763 | 327.439 | 2.9 | .8 | .2 | .2 | .6 |

See footnotes at end of table.

Table 4. Consumer Price Index for Urban Wage Earners and Clerical Workers (CPI-W): U.S. city average, by expenditure category and commodity and service group-Continued

(1982-84=100, unless otherwise noted)

| CPI-W Expenditure category | Relative importance, December 2009 | Unadjusted indexes | | Unadjusted percent change to Jan. 2010 from— | | Seasonally adjusted percent change from— | | | |
|--|------------------------------------|--------------------|-----------|--|-----------|--|--------------|--------------|--|
| | | Dec. 2009 | Jan. 2010 | Jan. 2009 | Dec. 2009 | Oct. to Nov. | Nov. to Dec. | Dec. to Jan. | |
| Hospital and related services ³ | 1.339 | 580.567 | 587.101 | 7.2 | 1.1 | 0.8 | 0.6 | 0.4 | |
| Recreation ² | 6.031 | 109.851 | 109.964 | -.6 | .1 | -.1 | -.3 | .0 | |
| Video and audio ² | 2.046 | 100.400 | 100.473 | -1.0 | .1 | .2 | -.1 | -.1 | |
| Education and communication ² | 6.175 | 124.156 | 124.293 | 1.9 | .1 | -.1 | .2 | .2 | |
| Education ² | 2.327 | 192.760 | 193.049 | 4.6 | .1 | .4 | .3 | .3 | |
| Educational books and supplies | .196 | 499.478 | 503.416 | 6.9 | .8 | .7 | .4 | .4 | |
| Tuition, other school fees, and childcare | 2.131 | 542.036 | 542.531 | 4.3 | .1 | .3 | .3 | .3 | |
| Communication ² | 3.848 | 87.541 | 87.617 | .0 | .1 | -.4 | .1 | .1 | |
| Information and information processing ^{1 2} | 3.715 | 85.404 | 85.433 | -.2 | .0 | -.4 | .1 | .0 | |
| Telephone services ^{1 2} | 2.906 | 102.585 | 102.504 | .6 | -.1 | -.4 | -.2 | -.1 | |
| Information technology, hardware and services ^{1 5} | .809 | 9.935 | 9.978 | -4.2 | .4 | -.3 | -.3 | .4 | |
| Personal computers and peripheral equipment ⁶ | .225 | 77.821 | 78.278 | -11.2 | .6 | .1 | -.6 | -.3 | |
| Other goods and services | 3.919 | 403.970 | 404.632 | 11.1 | .2 | .5 | .2 | .1 | |
| Tobacco and smoking products ¹ | 1.397 | 789.173 | 791.959 | 29.7 | .4 | 1.0 | .3 | .4 | |
| Personal care | 2.522 | 203.454 | 203.575 | 1.2 | .1 | .1 | .2 | .0 | |
| Personal care products ¹ | .733 | 162.231 | 161.689 | -.6 | -.3 | -.3 | .3 | -.3 | |
| Personal care services ¹ | .577 | 228.614 | 228.793 | 1.3 | .1 | .0 | .0 | .1 | |
| Miscellaneous personal services | 1.019 | 349.851 | 351.329 | 2.4 | .4 | .4 | .2 | .3 | |
| Commodity and service group | | | | | | | | | |
| Commodities | 43.589 | 175.127 | 176.413 | 6.8 | .7 | .4 | .5 | .9 | |
| Food and beverages | 16.425 | 217.186 | 218.354 | -.4 | .5 | .1 | .1 | .2 | |
| Commodities less food and beverages | 27.164 | 152.532 | 153.834 | 11.5 | .9 | .6 | .7 | 1.3 | |
| Nondurables less food and beverages | 16.703 | 193.667 | 195.981 | 17.6 | 1.2 | 1.5 | .8 | 1.9 | |
| Apparel | 3.788 | 118.984 | 116.310 | 1.2 | -2.2 | -.3 | .2 | .0 | |
| Nondurables less food, beverages, and apparel | 12.915 | 244.413 | 249.801 | 23.4 | 2.2 | 1.6 | .9 | 2.5 | |
| Durables | 10.461 | 112.165 | 112.511 | 3.5 | .3 | .5 | .5 | .1 | |
| Services | 56.411 | 254.519 | 254.918 | .7 | .2 | .1 | .0 | -.1 | |
| Rent of shelter ⁴ | 29.868 | 233.241 | 233.252 | .1 | .0 | -.1 | .0 | -.2 | |
| Tenants' and household insurance ^{1 2} | .303 | 124.415 | 125.299 | 3.8 | .7 | .1 | 1.3 | .7 | |
| Gas (piped) and electricity ³ | 4.246 | 187.125 | 188.607 | -4.6 | .8 | 1.0 | -.3 | .2 | |
| Water and sewer and trash collection services ² | 1.114 | 165.808 | 167.473 | 6.2 | 1.0 | -.2 | .4 | .8 | |
| Household operations ^{1 2} | .369 | 152.486 | 151.499 | -.5 | -.6 | -.4 | -.2 | -.6 | |
| Transportation services | 5.918 | 256.007 | 255.577 | 3.5 | -.2 | .4 | .3 | -.2 | |
| Medical care services | 3.961 | 403.791 | 407.286 | 3.7 | .9 | .4 | .3 | .5 | |
| Other services | 10.631 | 293.470 | 293.972 | 1.9 | .2 | .0 | .1 | .2 | |
| Special indexes | | | | | | | | | |
| All items less food | 84.667 | 210.639 | 211.440 | 4.1 | .4 | .3 | .3 | .4 | |
| All items less shelter | 69.829 | 202.951 | 204.128 | 4.8 | .6 | .4 | .3 | .6 | |
| All items less medical care | 94.739 | 204.800 | 205.589 | 3.3 | .4 | .2 | .2 | .3 | |
| Commodities less food | 28.256 | 154.918 | 156.200 | 11.1 | .8 | .6 | .6 | 1.3 | |
| Nondurables less food | 17.795 | 195.487 | 197.701 | 16.5 | 1.1 | 1.5 | .8 | 1.8 | |
| Nondurables less food and apparel | 14.007 | 241.513 | 246.455 | 21.5 | 2.0 | 1.7 | .8 | 2.3 | |
| Nondurables | 33.128 | 205.823 | 207.611 | 8.0 | .9 | .4 | .4 | 1.1 | |
| Services less rent of shelter ⁴ | 26.543 | 247.174 | 247.985 | 1.5 | .3 | .3 | .2 | .1 | |
| Services less medical care services | 52.450 | 243.838 | 244.090 | .5 | .1 | .1 | .1 | -.1 | |
| Energy | 10.291 | 202.398 | 208.222 | 20.7 | 2.9 | 1.6 | 1.1 | 3.1 | |
| All items less energy | 89.709 | 213.780 | 214.048 | 1.6 | .1 | .1 | .1 | .0 | |
| All items less food and energy | 74.376 | 213.572 | 213.647 | 2.0 | .0 | .1 | .1 | .0 | |
| Commodities less food and energy commodities | 22.211 | 145.253 | 145.065 | 3.9 | -.1 | .3 | .3 | .2 | |
| Energy commodities | 6.045 | 228.303 | 238.217 | 47.2 | 4.3 | 1.9 | 2.1 | 5.0 | |
| Services less energy services | 52.165 | 261.871 | 262.146 | 1.2 | .1 | .0 | .1 | -.1 | |
| Purchasing power of the consumer dollar (1982-84=\$1.00) | - | \$.472 | \$.470 | - | - | - | - | - | |
| Purchasing power of the consumer dollar (1967=\$1.00) | - | \$.159 | \$.158 | - | - | - | - | - | |

¹ Not seasonally adjusted.

² Indexes on a December 1997=100 base.

³ This index series was calculated using a Laspeyres estimator. All other item stratum index series were calculated using a geometric means estimator.

⁴ Indexes on a December 1984=100 base

⁵ Indexes on a December 1988=100 base.

⁶ Indexes on a December 2007=100 base.

- Data not available.

NOTE: Index applies to a month as a whole, not to any specific date.

Table 5. Consumer Price Index for Urban Wage Earners and Clerical Workers (CPI-W): Seasonally adjusted U.S. city average, by expenditure category and commodity and service group

(1982-84=100, unless otherwise noted)

| Expenditure category | Seasonally adjusted indexes | | | | Seasonally adjusted annual rate percent change for | | | | | | |
|---|-----------------------------|--------------|--------------|--------------|--|--------------|--------------|-----------------|--------------|--------------|--|
| | | | | | 3 months ended— | | | 6 months ended— | | | |
| | Oct. 2009 | Nov. 2009 | Dec. 2009 | Jan. 2010 | Apr. 2009 | July 2009 | Oct. 2009 | Jan. 2010 | July 2009 | Jan. 2010 | |
| All items | 211.900 | 212.417 | 212.920 | 213.638 | 1.9 | 4.6 | 3.9 | 3.3 | 3.2 | 3.6 | |
| Food and beverages | 216.932 | 217.109 | 217.426 | 217.876 | -1.5 | -1.6 | .1 | 1.8 | -1.6 | .9 | |
| Food | 216.437 | 216.553 | 216.887 | 217.376 | -1.6 | -2.0 | .0 | 1.7 | -1.8 | .8 | |
| Food at home | 212.024 | 211.914 | 212.400 | 213.166 | -4.6 | -4.1 | -1.4 | 2.2 | -4.4 | .4 | |
| Cereals and bakery products | 252.390 | 252.586 | 253.427 | 251.835 | -3.9 | -1.4 | .1 | -.9 | -2.6 | -.4 | |
| Meats, poultry, fish, and eggs | 199.745 | 200.374 | 200.365 | 201.172 | -3.4 | -8.5 | -3.5 | 2.9 | -6.0 | -.3 | |
| Dairy and related products ¹ | 194.120 | 192.695 | 193.546 | 197.663 | -22.4 | -7.8 | 5.0 | 7.5 | -15.4 | 6.2 | |
| Fruits and vegetables | 265.483 | 265.811 | 267.011 | 270.176 | .1 | -2.8 | -9.3 | 7.3 | -1.3 | -1.4 | |
| Nonalcoholic beverages and beverage materials | 162.071 | 161.582 | 161.738 | 162.068 | -.7 | -1.4 | -.5 | .0 | -1.0 | -.3 | |
| Other food at home | 190.441 | 190.110 | 190.619 | 190.215 | -2.6 | -1.5 | 1.6 | -.5 | -2.0 | .5 | |
| Sugar and sweets | 196.665 | 197.888 | 198.163 | 197.745 | -.3 | -3.1 | 6.6 | 2.2 | -1.4 | 4.4 | |
| Fats and oils | 199.426 | 198.650 | 199.828 | 200.194 | -6.6 | -4.5 | -3.1 | 1.5 | -5.6 | -.8 | |
| Other foods | 205.693 | 205.097 | 205.590 | 205.030 | -2.4 | -.6 | 1.4 | -1.3 | -1.5 | .1 | |
| Other miscellaneous foods ^{1 2} | 122.676 | 121.647 | 122.796 | 122.051 | -4.3 | -3.2 | 1.8 | -2.0 | -3.8 | -.1 | |
| Food away from home ¹ | 224.382 | 224.815 | 224.940 | 225.015 | 2.7 | .8 | 1.8 | 1.1 | 1.7 | 1.4 | |
| Other food away from home ^{1 2} | 156.909 | 156.853 | 156.830 | 157.670 | 2.7 | 6.6 | .0 | 2.0 | 4.6 | 1.0 | |
| Alcoholic beverages | 222.729 | 223.819 | 223.876 | 223.748 | -.3 | 4.1 | 1.9 | 1.8 | 1.9 | 1.9 | |
| Housing | 213.046 | 213.130 | 213.065 | 212.818 | -.5 | -.8 | .4 | -.4 | -.6 | .0 | |
| Shelter | 242.937 | 242.620 | 242.592 | 241.969 | 1.3 | .5 | .1 | -1.6 | .9 | -.8 | |
| Rent of primary residence ³ | 247.485 | 247.276 | 247.237 | 247.305 | 1.7 | .6 | -.6 | -.3 | 1.1 | -.4 | |
| Lodging away from home ² | 135.406 | 133.804 | 133.606 | 130.907 | -9.5 | -5.2 | 5.4 | -12.6 | -7.4 | -4.1 | |
| Owners' equivalent rent of residences ^{3 4} | 232.841 | 232.633 | 232.585 | 232.351 | 1.8 | .8 | .0 | -.8 | 1.3 | -.4 | |
| Owners' equivalent rent of primary residence ^{3 4} | 232.841 | 232.633 | 232.585 | 232.351 | 1.8 | .8 | .0 | -.8 | 1.3 | -.4 | |
| Tenants' and household insurance ^{1 2} | 122.761 | 122.830 | 124.415 | 125.299 | 1.2 | 2.3 | 3.3 | 8.5 | 1.7 | 5.9 | |
| Fuels and utilities | 208.224 | 210.569 | 210.281 | 211.617 | -10.4 | -7.5 | 4.8 | 6.7 | -9.0 | 5.8 | |
| Household energy | 183.934 | 186.409 | 185.937 | 187.075 | -13.5 | -10.4 | 4.4 | 7.0 | -12.0 | 5.7 | |
| Fuel oil and other fuels ¹ | 246.153 | 262.340 | 265.130 | 284.061 | -28.1 | 1.6 | 24.5 | 77.3 | -14.5 | 48.6 | |
| Gas (piped) and electricity ³ | 189.336 | 191.296 | 190.655 | 191.039 | -12.6 | -11.0 | 3.3 | 3.6 | -11.8 | 3.5 | |
| Water and sewer and trash collection services ² | 164.766 | 165.035 | 165.662 | 167.045 | 5.6 | 6.7 | 6.8 | 5.6 | 6.1 | 6.2 | |
| Household furnishings and operations | 124.040 | 123.776 | 123.744 | 123.590 | 1.6 | -.8 | -2.9 | -1.4 | .4 | -2.2 | |
| Household operations ^{1 2} | 153.368 | 152.747 | 152.486 | 151.499 | 1.9 | -1.0 | 2.1 | -4.8 | .4 | -1.4 | |
| Apparel | 120.250 | 119.871 | 120.151 | 120.099 | 1.9 | 4.3 | -.7 | -.5 | 3.1 | -.6 | |
| Men's and boys' apparel | 113.463 | 112.900 | 112.285 | 112.252 | .5 | -1.1 | -2.3 | -4.2 | -.3 | -3.3 | |
| Women's and girls' apparel | 108.287 | 107.522 | 108.442 | 108.554 | .2 | 8.6 | -1.3 | 1.0 | 4.3 | -.1 | |
| Infants' and toddlers' apparel | 117.191 | 116.678 | 116.548 | 118.441 | 4.8 | 2.4 | -3.5 | 4.3 | 3.6 | .3 | |
| Footwear | 128.423 | 128.856 | 129.173 | 129.256 | 5.5 | 5.4 | 1.3 | 2.6 | 5.4 | 1.9 | |
| Transportation | 185.991 | 187.971 | 189.949 | 193.144 | 3.8 | 27.8 | 20.1 | 16.3 | 15.2 | 18.2 | |
| Private transportation | 182.797 | 184.689 | 186.609 | 190.031 | 4.5 | 29.0 | 20.3 | 16.8 | 16.1 | 18.5 | |
| New and used motor vehicles ² | 93.524 | 94.438 | 95.030 | 95.343 | .2 | 5.8 | 12.0 | 8.0 | 2.9 | 10.0 | |
| New vehicles | 138.977 | 139.664 | 139.358 | 138.596 | 6.8 | 7.3 | 3.1 | -1.1 | 7.1 | 1.0 | |
| Used cars and trucks | 133.282 | 135.844 | 138.813 | 140.866 | -11.7 | 7.7 | 30.7 | 24.8 | -2.5 | 27.7 | |
| Motor fuel | 228.998 | 232.924 | 237.946 | 249.602 | 12.7 | 114.8 | 46.2 | 41.1 | 55.6 | 43.6 | |
| Gasoline (all types) | 226.694 | 233.205 | 238.841 | 249.318 | 18.4 | 120.3 | 37.4 | 46.3 | 61.5 | 41.8 | |
| Motor vehicle parts and equipment ¹ | 133.764 | 134.346 | 134.892 | 135.383 | 2.9 | -2.4 | -.1 | 4.9 | .2 | 2.4 | |
| Motor vehicle maintenance and repair ¹ | 247.811 | 247.972 | 247.812 | 247.975 | 2.6 | .4 | 4.0 | .3 | 1.5 | 2.1 | |
| Public transportation | 240.341 | 244.557 | 247.857 | 243.274 | -10.6 | 3.8 | 16.2 | 5.0 | -3.7 | 10.5 | |
| Medical care | 379.664 | 380.838 | 381.504 | 383.504 | 4.1 | 2.7 | 3.7 | 4.1 | 3.4 | 3.9 | |
| Medical care commodities ¹ | 299.742 | 299.972 | 299.777 | 301.890 | 5.6 | .2 | 5.3 | 2.9 | 2.9 | 4.1 | |
| Medical care services | 402.908 | 404.460 | 405.483 | 407.372 | 3.6 | 3.5 | 3.1 | 4.5 | 3.6 | 3.8 | |
| Professional services | 324.781 | 325.379 | 325.933 | 327.911 | 1.4 | 3.6 | 2.8 | 3.9 | 2.5 | 3.4 | |

See footnotes at end of table.

Table 5. Consumer Price Index for Urban Wage Earners and Clerical Workers (CPI-W): Seasonally adjusted U.S. city average, by expenditure category and commodity and service group-Continued

(1982-84=100, unless otherwise noted)

| CPI-W | Seasonally adjusted indexes | | | | Seasonally adjusted annual rate percent change for | | | | | |
|--|-----------------------------|--------------|--------------|--------------|--|--------------|--------------|-----------------|--------------|--------------|
| | | | | | 3 months ended— | | | 6 months ended— | | |
| | Oct. 2009 | Nov. 2009 | Dec. 2009 | Jan. 2010 | Apr. 2009 | July 2009 | Oct. 2009 | Jan. 2010 | July 2009 | Jan. 2010 |
| Expenditure category | | | | | | | | | | |
| Hospital and related services ³ | 574.800 | 579.659 | 583.389 | 585.929 | 9.2 | 5.8 | 5.8 | 8.0 | 7.5 | 6.9 |
| Recreation ² | 110.715 | 110.559 | 110.221 | 110.176 | .6 | 1.2 | -2.2 | -1.9 | .9 | -2.1 |
| Video and audio ² | 100.784 | 101.026 | 100.934 | 100.793 | .8 | -2 | -4.6 | .0 | .3 | -2.3 |
| Education and communication ² | 123.757 | 123.678 | 123.911 | 124.142 | 2.2 | 2.6 | 1.5 | 1.3 | 2.4 | 1.4 |
| Education ² | 190.529 | 191.203 | 191.835 | 192.430 | 4.8 | 5.7 | 3.7 | 4.1 | 5.3 | 3.9 |
| Educational books and supplies | 494.149 | 497.706 | 499.745 | 501.581 | 6.5 | 10.4 | 4.5 | 6.2 | 8.4 | 5.3 |
| Tuition, other school fees, and childcare | 535.715 | 537.418 | 539.155 | 540.811 | 4.7 | 5.2 | 3.6 | 3.9 | 5.0 | 3.7 |
| Communication ² | 87.783 | 87.469 | 87.545 | 87.616 | .3 | .5 | .0 | -.8 | .4 | -.4 |
| Information and information processing ^{1 2} | 85.651 | 85.331 | 85.404 | 85.433 | .3 | .0 | .0 | -1.0 | .2 | -.5 |
| Telephone services ^{1 2} | 102.818 | 102.413 | 102.585 | 102.504 | .7 | 2.1 | .9 | -1.2 | 1.4 | -.2 |
| Information technology, hardware and services ^{1 5} | 9.995 | 9.969 | 9.935 | 9.978 | -1.3 | -10.1 | -4.6 | -.7 | -5.8 | -2.7 |
| Personal computers and peripheral equipment ⁶ | 78.602 | 78.673 | 78.163 | 77.929 | -15.2 | -14.5 | -11.3 | -3.4 | -14.9 | -7.4 |
| Other goods and services | 401.378 | 403.360 | 404.292 | 404.888 | 36.9 | 4.4 | 2.9 | 3.5 | 19.5 | 3.2 |
| Tobacco and smoking products ¹ | 778.650 | 786.541 | 789.173 | 791.959 | 125.2 | 11.2 | 5.7 | 7.0 | 58.3 | 6.3 |
| Personal care | 203.105 | 203.399 | 203.727 | 203.775 | 2.2 | .1 | 1.0 | 1.3 | 1.2 | 1.2 |
| Personal care products ¹ | 162.242 | 161.784 | 162.231 | 161.689 | 3.1 | -2.8 | -1.3 | -1.4 | .1 | -1.3 |
| Personal care services ¹ | 228.683 | 228.614 | 228.614 | 228.793 | 3.9 | -1.1 | 2.1 | .2 | 1.4 | 1.1 |
| Miscellaneous personal services | 348.814 | 350.374 | 351.092 | 352.090 | 1.0 | 2.3 | 2.6 | 3.8 | 1.6 | 3.2 |
| Commodity and service group | | | | | | | | | | |
| Commodities | 175.057 | 175.805 | 176.635 | 178.233 | 3.6 | 10.2 | 7.1 | 7.5 | 6.9 | 7.3 |
| Food and beverages | 216.932 | 217.109 | 217.426 | 217.876 | -1.5 | -1.6 | .1 | 1.8 | -1.6 | .9 |
| Commodities less food and beverages | 152.540 | 153.502 | 154.519 | 156.580 | 7.1 | 18.3 | 11.5 | 11.0 | 12.6 | 11.3 |
| Nondurables less food and beverages | 193.919 | 196.863 | 198.438 | 202.280 | 7.2 | 32.4 | 13.7 | 18.4 | 19.2 | 16.0 |
| Apparel | 120.250 | 119.871 | 120.151 | 120.099 | 1.9 | 4.3 | -.7 | -.5 | 3.1 | -.6 |
| Nondurables less food, beverages, and apparel | 244.731 | 248.738 | 251.007 | 257.262 | 10.8 | 44.3 | 18.9 | 22.1 | 26.4 | 20.5 |
| Durables | 111.161 | 111.728 | 112.317 | 112.382 | -.2 | 2.9 | 7.1 | 4.5 | 1.3 | 5.8 |
| Services | 255.036 | 255.245 | 255.350 | 255.157 | .6 | .5 | 1.5 | .2 | .5 | .9 |
| Rent of shelter ⁴ | 234.213 | 234.029 | 234.082 | 233.607 | .8 | .3 | .4 | -1.0 | .6 | -.3 |
| Tenants' and household insurance ^{1 2} | 122.761 | 122.830 | 124.415 | 125.299 | 1.2 | 2.3 | 3.3 | 8.5 | 1.7 | 5.9 |
| Gas (piped) and electricity ³ | 189.336 | 191.296 | 190.655 | 191.039 | -12.6 | -11.0 | 3.3 | 3.6 | -11.8 | 3.5 |
| Water and sewer and trash collection services ² | 164.766 | 165.035 | 165.662 | 167.045 | 5.6 | 6.7 | 6.8 | 5.6 | 6.1 | 6.2 |
| Household operations ^{1 2} | 153.368 | 152.747 | 152.486 | 151.499 | 1.9 | -1.0 | 2.1 | -4.8 | .4 | -1.4 |
| Transportation services | 254.466 | 255.455 | 256.122 | 255.588 | 3.4 | 1.7 | 6.9 | 1.8 | 2.5 | 4.3 |
| Medical care services | 402.908 | 404.460 | 405.483 | 407.372 | 3.6 | 3.5 | 3.1 | 4.5 | 3.6 | 3.8 |
| Other services | 293.210 | 293.299 | 293.681 | 294.133 | 1.7 | 3.3 | 1.2 | 1.3 | 2.5 | 1.3 |
| Special indexes | | | | | | | | | | |
| All items less food | 210.912 | 211.499 | 212.031 | 212.790 | 2.5 | 5.9 | 4.7 | 3.6 | 4.2 | 4.1 |
| All items less shelter | 202.876 | 203.704 | 204.406 | 205.615 | 2.1 | 6.5 | 5.7 | 5.5 | 4.3 | 5.6 |
| All items less medical care | 205.020 | 205.514 | 206.007 | 206.680 | 1.7 | 4.7 | 3.9 | 3.3 | 3.2 | 3.6 |
| Commodities less food | 154.915 | 155.883 | 156.879 | 158.886 | 6.8 | 17.7 | 11.1 | 10.7 | 12.1 | 10.9 |
| Nondurables less food | 195.656 | 198.543 | 200.048 | 203.681 | 6.6 | 30.3 | 12.9 | 17.4 | 17.9 | 15.1 |
| Nondurables less food and apparel | 241.451 | 245.496 | 247.582 | 253.287 | 9.6 | 40.4 | 16.8 | 21.1 | 24.0 | 18.9 |
| Nondurables | 206.650 | 207.442 | 208.232 | 210.553 | 2.9 | 12.6 | 8.8 | 7.8 | 7.7 | 8.3 |
| Services less rent of shelter ⁴ | 246.991 | 247.833 | 248.380 | 248.589 | -.1 | .1 | 3.4 | 2.6 | .0 | 3.0 |
| Services less medical care services | 244.392 | 244.619 | 244.797 | 244.523 | .3 | .0 | 1.6 | .2 | .1 | .9 |
| Energy | 204.717 | 207.897 | 210.195 | 216.617 | -1.8 | 40.6 | 25.7 | 25.4 | 17.5 | 25.5 |
| All items less energy | 213.715 | 213.906 | 214.189 | 214.235 | 2.3 | 1.3 | 1.7 | 1.0 | 1.8 | 1.3 |
| All items less food and energy | 213.543 | 213.749 | 214.023 | 213.979 | 3.1 | 2.0 | 2.0 | .8 | 2.6 | 1.4 |
| Commodities less food and energy commodities | 144.786 | 145.242 | 145.608 | 145.835 | 6.0 | 3.3 | 3.5 | 2.9 | 4.6 | 3.2 |
| Energy commodities | 230.861 | 235.286 | 240.247 | 252.253 | 9.9 | 107.3 | 45.2 | 42.5 | 51.0 | 43.8 |
| Services less energy services | 262.189 | 262.192 | 262.385 | 262.136 | 1.8 | 1.5 | 1.4 | -.1 | 1.7 | .7 |

¹ Not seasonally adjusted.

² Indexes on a December 1997=100 base.

³ This index series was calculated using a Laspeyres estimator. All other item stratum index series were calculated using a geometric means estimator.

⁴ Indexes on a December 1984=100 base

⁵ Indexes on a December 1988=100 base.

⁶ Indexes on a December 2007=100 base.

NOTE: Index applies to a month as a whole, not to any specific date.

Table 6. Consumer Price Index for Urban Wage Earners and Clerical Workers (CPI-W): Selected areas, all items index

(1982-84=100, unless otherwise noted)

| CPI-W | Pricing schedule 1 | All items | | | | | | | | | |
|--|-----------------------|-----------|-----------|-----------|-----------|----------------------------------|-----------|-----------|----------------------------------|-----------|-----------|
| | | Indexes | | | | Percent change to Jan.2010 from— | | | Percent change to Dec.2009 from— | | |
| | | Oct. 2009 | Nov. 2009 | Dec. 2009 | Jan. 2010 | Jan. 2009 | Nov. 2009 | Dec. 2009 | Dec. 2008 | Oct. 2009 | Nov. 2009 |
| U.S. city average | M | 211.549 | 212.003 | 211.703 | 212.568 | 3.3 | 0.3 | 0.4 | 3.4 | 0.1 | -0.1 |
| Region and area size² | | | | | | | | | | | |
| Northeast urban | M | 228.193 | 229.048 | 228.794 | 229.744 | 3.6 | .3 | .4 | 3.3 | .3 | -.1 |
| Size A - More than 1,500,000 | M | 228.720 | 229.541 | 229.180 | 229.919 | 3.2 | .2 | .3 | 2.9 | .2 | -.2 |
| Size B/C - 50,000 to 1,500,000 ³ | M | 137.959 | 138.527 | 138.522 | 139.364 | 4.5 | .6 | .6 | 4.2 | .4 | .0 |
| Midwest urban | M | 200.781 | 201.553 | 200.999 | 202.180 | 3.6 | .3 | .6 | 3.6 | .1 | -.3 |
| Size A - More than 1,500,000 | M | 200.730 | 201.626 | 200.820 | 201.957 | 3.2 | .2 | .6 | 3.5 | .0 | -.4 |
| Size B/C - 50,000 to 1,500,000 ³ | M | 131.420 | 131.823 | 131.639 | 132.502 | 3.7 | .5 | .7 | 3.6 | .2 | -.1 |
| Size D - Nonmetropolitan (less than 50,000) | M | 200.053 | 200.748 | 200.471 | 201.414 | 4.4 | .3 | .5 | 4.2 | .2 | -.1 |
| South urban | M | 206.121 | 206.859 | 206.716 | 207.405 | 3.7 | .3 | .3 | 3.7 | .3 | -.1 |
| Size A - More than 1,500,000 | M | 208.577 | 209.161 | 208.788 | 209.619 | 3.0 | .2 | .4 | 2.8 | .1 | -.2 |
| Size B/C - 50,000 to 1,500,000 ³ | M | 131.621 | 132.129 | 132.136 | 132.508 | 3.9 | .3 | .3 | 4.0 | .4 | .0 |
| Size D - Nonmetropolitan (less than 50,000) | M | 212.368 | 213.396 | 213.184 | 213.984 | 4.7 | .3 | .4 | 5.0 | .4 | -.1 |
| West urban | M | 214.718 | 214.228 | 213.919 | 214.664 | 2.5 | .2 | .3 | 2.8 | -.4 | -.1 |
| Size A - More than 1,500,000 | M | 217.002 | 216.286 | 215.988 | 216.905 | 2.4 | .3 | .4 | 2.5 | -.5 | -.1 |
| Size B/C - 50,000 to 1,500,000 ³ | M | 133.244 | 133.149 | 132.983 | 133.238 | 2.8 | .1 | .2 | 3.4 | -.2 | -.1 |
| Size classes | | | | | | | | | | | |
| A ⁴ | M | 195.895 | 196.187 | 195.779 | 196.606 | 2.9 | .2 | .4 | 2.9 | -.1 | -.2 |
| B/C ³ | M | 132.764 | 133.139 | 133.072 | 133.589 | 3.7 | .3 | .4 | 3.8 | .2 | -.1 |
| D | M | 207.120 | 207.739 | 207.417 | 208.297 | 4.1 | .3 | .4 | 4.1 | .1 | -.2 |
| Selected local areas⁵ | | | | | | | | | | | |
| Chicago-Gary-Kenosha, IL-IN-WI | M | 204.511 | 205.136 | 204.196 | 205.529 | 2.7 | .2 | .7 | 2.9 | -.2 | -.5 |
| Los Angeles-Riverside-Orange County, CA ... | M | 217.474 | 216.618 | 216.233 | 217.290 | 2.3 | .3 | .5 | 2.5 | -.6 | -.2 |
| New York-Northern N.J.-Long Island, NY-NJ-CT-PA | M | 233.084 | 233.893 | 233.448 | 234.067 | 2.9 | .1 | .3 | 2.7 | .2 | -.2 |
| Boston-Brockton-Nashua, MA-NH-ME-CT | 1 | - | 236.859 | - | 237.999 | 3.4 | .5 | - | - | - | - |
| Cleveland-Akron, OH | 1 | - | 192.871 | - | 194.529 | 3.0 | .9 | - | - | - | - |
| Dallas-Fort Worth, TX | 1 | - | 205.297 | - | 205.456 | 3.0 | .1 | - | - | - | - |
| Washington-Baltimore, DC-MD-VA-WV ⁶ | 1 | - | 140.608 | - | 141.155 | 3.5 | .4 | - | - | - | - |
| Atlanta, GA | 2 | 199.736 | - | 199.331 | - | - | - | - | 2.1 | -.2 | - |
| Detroit-Ann Arbor-Flint, MI | 2 | 200.324 | - | 199.614 | - | - | - | - | 3.5 | -.4 | - |
| Houston-Galveston-Brazoria, TX | 2 | 189.304 | - | 188.842 | - | - | - | - | 3.1 | -.2 | - |
| Miami-Fort Lauderdale, FL | 2 | 220.358 | - | 221.067 | - | - | - | - | 2.4 | .3 | - |
| Philadelphia-Wilmington-Atlantic City, PA-NJ-DE-MD | 2 | 224.573 | - | 224.732 | - | - | - | - | 3.3 | .1 | - |
| San Francisco-Oakland-San Jose, CA | 2 | 221.708 | - | 220.121 | - | - | - | - | 3.0 | -.7 | - |
| Seattle-Tacoma-Bremerton, WA | 2 | 221.339 | - | 220.905 | - | - | - | - | 2.1 | -.2 | - |

¹ Foods, fuels, and several other items priced every month in all areas; most other goods and services priced as indicated:

M - Every month.

1 - January, March, May, July, September, and November.

2 - February, April, June, August, October, and December.

² Regions defined as the four Census regions. See technical notes.

³ Indexes on a December 1996=100 base.

⁴ Indexes on a December 1986=100 base.

⁵ In addition, the following metropolitan areas are published semiannually and appear in Tables 34 and 39 of the January and July issues of the CPI Detailed Report: Anchorage, AK; Cincinnati-Hamilton, OH-KY-IN; Denver-Boulder-Greeley, CO; Honolulu, HI; Kansas City, MO-KS; Milwaukee-Racine, WI; Minneapolis-St. Paul, MN-WI; Phoenix-Mesa, AZ; Pittsburgh, PA; Portland-Salem, OR-WA; St. Louis, MO-IL; San Diego, CA;

Tampa-St. Petersburg-Clearwater, FL.

⁶ Indexes on a November 1996=100 base.

- Data not available.

NOTE: Local area indexes are byproducts of the national CPI program. Each local index has a smaller sample size than the national index and is, therefore, subject to substantially more sampling and other measurement error. As a result, local area indexes show greater volatility than the national index, although their long-term trends are similar. Therefore, the Bureau of Labor Statistics strongly urges users to consider adopting the national average CPI for use in their escalator clauses.

NOTE: Index applies to a month as a whole, not to any specific date.

Table 7. Chained Consumer Price Index for All Urban Consumers (C-CPI-U): U.S. city average, by expenditure category and commodity and service group

(December 1999=100, unless otherwise noted)

| C-CPI-U | Relative importance, 2007-2008 | Unadjusted indexes | | Unadjusted percent change to Jan. 2010 from— | |
|--|--------------------------------|----------------------|-----------|--|-----------|
| | | Dec. 2009 | Jan. 2010 | Jan. 2009 | Dec. 2009 |
| | | Expenditure category | | | |
| All items | 100.000 | 125.174 | 125.626 | 2.8 | 0.4 |
| Food and beverages | 14.519 | 127.274 | 127.981 | -5 | .6 |
| Food | 13.493 | 127.214 | 127.962 | -6 | .6 |
| Food at home | 7.780 | 121.918 | 123.115 | -2.2 | 1.0 |
| Food away from home | 5.712 | 134.482 | 134.554 | 1.6 | .1 |
| Alcoholic beverages | 1.027 | 128.505 | 128.680 | 1.3 | .1 |
| Housing | 42.074 | 128.009 | 128.292 | -5 | .2 |
| Shelter | 32.119 | 130.739 | 130.799 | -.1 | .0 |
| Fuels and utilities | 5.231 | 155.703 | 157.925 | -2.0 | 1.4 |
| Household furnishings and operations | 4.724 | 94.422 | 94.503 | -1.7 | .1 |
| Apparel | 3.772 | 89.124 | 86.984 | 1.5 | -2.4 |
| Transportation | 17.199 | 128.495 | 130.159 | 17.1 | 1.3 |
| Private transportation | 16.013 | 129.097 | 131.066 | 18.2 | 1.5 |
| Public transportation | 1.186 | 120.425 | 118.303 | 2.7 | -1.8 |
| Medical care | 6.294 | 147.148 | 148.326 | 3.1 | .8 |
| Medical care commodities | 1.570 | 129.930 | 130.850 | 3.2 | .7 |
| Medical care services | 4.723 | 153.462 | 154.738 | 3.1 | .8 |
| Recreation | 6.625 | 103.377 | 103.359 | -2.1 | .0 |
| Education and communication | 6.288 | 111.681 | 111.806 | 1.4 | .1 |
| Education | 2.804 | 180.605 | 180.738 | 4.4 | .1 |
| Communication | 3.484 | 73.296 | 73.401 | -9 | .1 |
| Other goods and services | 3.229 | 136.919 | 136.994 | 6.2 | .1 |
| Commodity and service group | | | | | |
| Services | 59.383 | 134.398 | 134.615 | .5 | .2 |
| Commodities | 40.617 | 113.846 | 114.592 | 6.3 | .7 |
| Durables | 10.376 | 81.410 | 81.555 | 1.3 | .2 |
| Nondurables | 30.241 | 130.714 | 131.785 | 8.1 | .8 |
| All items less food and energy | 76.901 | 119.271 | 119.269 | 1.2 | .0 |
| Energy | 9.606 | 179.806 | 185.182 | 23.1 | 3.0 |

Indexes for 2010 are initial estimates. Indexes for 2009 are interim adjustments.
NOTE: Index applies to a month as a whole, not to any specific date.